

**TAPASAN**

# INFLATABLE PIPE PLUGS & PACKERS



# Table of Contents

About Us	1
<b>PIPE PLUG SERIES</b>	
Pipe Plugs	2
Mini Pipe Plugs	4
C Pipe Plugs	5
High Pressure Pipe Plugs	6
Egg-Shaped Pipe Plugs	8
Half Circle Pipe Plugs	9
<b>PIPE TEST PLUG SERIES</b>	
Pipe Test Plugs	10
Double By-pass Pipe Test Plugs	12
High Pressure Pipe Test Plugs	14
Large By-pass Pipe Test Plugs	16
Professional Pipe Test Plugs	17
Mini Pipe Test Plugs	18
Bagel-Shaped Pipe Test Plugs	19
Steam Pressure Pipe Test Plugs	20
Manhole Pipe Test Plugs	21
Egg-Shaped Pipe Test Plugs	22
Home Pipeline Test Plugs	23
C Test Plugs	24
Single Size Test Plugs with Metal	25
Joint Test Plugs	26
<b>PACKER SERIES</b>	
Mini Lateral Packers	28
Lateral Packers	30
Long Lateral Packers	32
Flexible Packer with By-pass	34
Bendy Packer	36
Medusa Packer	38
Lateral Packer with wheels	40
Egg-Shaped Packers	42
Short Packers	43
Wide Range Lateral Packers	44
Hat Packer	46
<b>ACCESSORIES</b>	
Accessories	47



TAPASAN is one of the leading companies in the sector that has been producing pipe plug, pipe test plug and point repair packers made of rubber, high-strength cloth and corrosion-resistant metal parts since 2011.

Today, it has proven its competence in the field of superior quality and engineering by selling to more than 47 countries, and has provided an infrastructure that ensures this rapid progress is sustainable.

We continue to grow and develop day by day with our innovative teammates working in our company, which produces from a closed area of 1700 m<sup>2</sup> in Turkey, with a wide range of products for the needs of our customers.

### Our Vision

We are aware that the products we produce as a team are technical products and we are aware that safety is the most important factor. The products we produce with this awareness; Risking the reputation of our company and the safety of your customers by subjecting them to tests far above the working pressures in their tests with fluids.

**+10**  
YEARS EXPERIENCE

**m<sup>2</sup> 1700**  
CLOSED AREA

**+47**  
COUNTRIES



# Pipe Plugs



TAPASAN pipe plugs are used for temporary blocking of pipelines. These are produced by vulcanizing SBR+NR rubber and high-strength fabrics. It is resistant to temperatures between -30°C and +70°C. Thanks to its wide diameter range, it allows to block multiple pipe diameter ranges with a single product. Production can be provided starting from 25mm pipe diameter up to 2800mm diameter. The most important advantage is that it grasps the pipe diameter it will work at very low pressures and reaches high friction force values at working pressure.

\*It can be produced with NBR rubber resistant to gas, petroleum and derivatives.

Product Code : KB



Connection Type (R 1/4")



Technical Details Label



Friction Increasing Design

Product Code	Size Usage Range		Max. Working Pressure (bar) / (psi)	Deflated Plug Dimensions		Back Pressure (bar) / (psi)	Approx. Weight (kg) / (lbs)
	Min. Diameter	Max. Diameter		Diameter	Total Length		
	(mm) / (inch)	(mm) / (inch)		(mm) / (inch)	(mm) / (inch)		
KB2550	25 / 1"	50 / 2"	3.0 / 44	33 / 1.3"	150 / 5.9"	1.0 / 15	0.15 / 0.3
KB3570	35 / 1.4"	70 / 2.8"	3.0 / 44	33 / 1.3"	175 / 6.8"	0.5 / 7.3	0.2 / 0.6
KB50100	50 / 2"	100 / 4"	1.5 / 22	47 / 1.9"	330 / 12.9"	1.0 / 15	0.3 / 0.7
KB50100/2,5	50 / 2"	100 / 4"	2.5 / 36	47 / 1.9"	330 / 12.9"	0.5 / 7.3	0.3 / 0.7
KB70150	70 / 2.8"	150 / 6"	1.5 / 22	68 / 2.7"	375 / 14.7"	1.0 / 15	0.4 / 0.9
KB70150/2,5	70 / 2.8"	150 / 6"	2.5 / 36	68 / 2.7"	375 / 14.7"	0.5 / 7.3	0.5 / 1.1
KB100200	100 / 4"	200 / 8"	1.5 / 22	91 / 3.6"	550 / 21.6"	1.0 / 15	0.8 / 1.7
KB100200/2,5	100 / 4"	200 / 8"	2.5 / 36	91 / 3.6"	550 / 21.6"	0.5 / 7.3	0.8 / 1.7
KB150300	150 / 6"	300 / 12"	1.5 / 22	140 / 5.5"	550 / 21.6"	1.0 / 15	1.5 / 3.3
KB150300/2,5	150 / 6"	300 / 12"	2.5 / 36	140 / 5.5"	550 / 21.6"	0.5 / 7.3	1.6 / 3.5
KB200400	200 / 8"	400 / 16"	1.5 / 22	187 / 7.4"	650 / 25.5"	1.0 / 15	3.2 / 7.0
KB200400/2,5	200 / 8"	400 / 16"	2.5 / 36	187 / 7.4"	650 / 25.5"	0.5 / 7.3	3.3 / 7.2
KB200500	200 / 8"	500 / 20"	1.5 / 22	187 / 7.4"	800 / 31.4"	1.0 / 15	3.7 / 8.1
KB200500/2,5	200 / 8"	500 / 20"	2.5 / 36	187 / 7.4"	800 / 31.4"	0.5 / 7.3	3.9 / 8.5
KB300600	300 / 12"	600 / 24"	1.5 / 22	286 / 11.3"	850 / 33.4"	1.0 / 15	7.0 / 15.4
KB300600/2,5	300 / 12"	600 / 24"	2.5 / 36	286 / 11.3"	850 / 33.4"	0.5 / 7.3	7.2 / 15.8
KB375750	375 / 15"	750 / 30"	1.5 / 22	361 / 14.2"	1000 / 39.3"	1.0 / 15	11.0 / 24.2
KB375750/2,5	375 / 15"	750 / 30"	2.5 / 36	361 / 14.2"	1000 / 39.3"	0.5 / 7.3	11.2 / 24.6
KB400800	400 / 16"	800 / 32"	1.5 / 22	365 / 14"	1000 / 39.3"	1.0 / 15	11.0 / 24.2
KB400800/2,5	400 / 16"	800 / 32"	2.5 / 36	365 / 14"	1000 / 39.3"	0.5 / 7.3	11.2 / 24.6
KB5001000	500 / 20"	1000 / 40"	1.5 / 22	486 / 19"	1100 / 43.3"	1.0 / 15	21.0 / 46.3
KB5001000/2,5	500 / 20"	1000 / 40"	2.5 / 36	486 / 19"	1100 / 43.3"	1.0 / 15	22.5 / 49.6
KB5001200	500 / 20"	1200 / 48"	1.5 / 22	486 / 19"	1450 / 57.0"	0.5 / 7.3	30.5 / 67.2
KB6001200	600 / 24"	1200 / 48"	1.5 / 22	586 / 23.1"	1300 / 51.1"	0.3 / 4.4	30.6 / 67.4
KB6001200/2,5	600 / 24"	1200 / 48"	2.5 / 36	586 / 23.1"	1300 / 51.1"	0.8 / 11.6	32.0 / 70.5
KB6001600	600 / 24"	1600 / 64"	1.0 / 15	586 / 23.1"	2050 / 80.7"	0.3 / 4.4	48.0 / 105.8
KB6001600/1,5	600 / 24"	1600 / 64"	1.5 / 22	586 / 23.1"	2050 / 80.7"	0.4 / 5.8	56.0 / 123.5
KB8001600	800 / 32"	1600 / 64"	1.0 / 15	782 / 30.8"	1800 / 70.8"	0.5 / 7.3	76.0 / 167.6
KB8001800	800 / 32"	1800 / 72"	1.0 / 15	782 / 30.8"	2250 / 88.5"	0.4 / 5.8	78.0 / 172.0
KB8002000	800 / 32"	2000 / 80"	1.0 / 15	782 / 30.8"	2750 / 108.2"	0.4 / 5.8	79.0 / 174.2
KB8002200	800 / 32"	2200 / 88"	1.0 / 15	782 / 30.8"	3250 / 127.9"	0.3 / 4.4	98.0 / 216.0
KB12002400	1200 / 48"	2400 / 96"	1.0 / 15	1172 / 46"	3050 / 120.0"	0.5 / 7.3	185.0 / 407.9
KB12002600	1200 / 48"	2600 / 104"	1.0 / 15	1172 / 46"	3050 / 120.0"	0.4 / 5.8	200.0 / 440.9
KB12002800	1200 / 48"	2800 / 110"	1.0 / 15	1172 / 46"	4050 / 159.4"	0.3 / 4.4	230.0 / 507.1



# Mini Pipe Plugs



TAPASAN Mini Pipe Plugs are used to temporarily blocking pipelines with short pipe lengths. These are produced by vulcanizing SBR+NR rubber and high-strength fabrics. It is resistant to temperatures between -30°C and +70°C. It is ideal for blocking lines where standard pipe plugs are long. The most important advantage is that it has a wide diameter range.

\*It can be produced with NBR rubber resistant to gas, petroleum and derivatives.

Product Code : KBM



Connection Type (R 1/4")



Technical Details Label



Friction Increasing Design

Product Code	Size Usage Range		Max. Working Pressure (bar) / (psi)	Deflated Plug Dimensions		Back Pressure (bar) / (psi)	Approx. Weight (kg) / (lbs)
	Min. Diameter	Max. Diameter		Diameter	Total Length		
	(mm) / (inch)	(mm) / (inch)		(mm) / (inch)	(mm) / (inch)		
KBM50100	50 / 2"	100 / 4"	2.5 / 36	45 / 1.8"	195 / 7.6"	0.3 / 4.4	0.3 / 0.66
KBM70150	70 / 2.8"	150 / 6"	2.5 / 36	65 / 2.6"	250 / 9.8"	0.3 / 4.4	0.4 / 0.88
KBM100200	100 / 4"	200 / 8"	3.0 / 44	88 / 3.5"	250 / 9.8"	0.3 / 4.4	0.7 / 1.5
KBM150300	150 / 6"	300 / 12"	2.5 / 36	140 / 5.5"	350 / 13.7"	0.3 / 4.4	1.2 / 2.6
KBM200400	200 / 8"	400 / 16"	2.5 / 36	187 / 7.4"	450 / 17.7"	0.3 / 4.4	1.8 / 3.9

# C Pipe Plugs



TAPASAN C pipe plugs are used to temporarily blocking pipelines with short pipe lengths. These are produced by vulcanizing SBR+NR rubber and high-strength fabrics. It is resistant to temperatures between -30°C and +70°C. Thanks to its extra short length, it can be easily used in house pipelines and short pipe distances.

\*It can be produced with NBR rubber resistant to gas, petroleum and derivatives.

Product Code : CKB



Connection Type (R 1/4")



Friction Increasing Design



Product Code	Size Usage Range		Max. Working Pressure (bar) / (psi)	Deflated Plug Dimensions		Approx. Weight (kg) / (lbs)
	Min. Diameter	Max. Diameter		Diameter	Total Length	
	(mm) / (inch)	(mm) / (inch)		(mm) / (inch)	(mm) / (inch)	
CKB25	25 / 1"		2.5 / 36	18 / 0.7"	60 / 2.3"	0.09 / 0.01
CKB30	30 / 1.2"		2.5 / 36	29 / 1.1"	60 / 2.3"	0.15 / 0.34
CKB40	40 / 1.6"		2.5 / 36	37 / 1.5"	90 / 3.5"	0.15 / 0.34
CKB50	50 / 2"		2.5 / 36	45 / 1.8"	110 / 4.3"	0.25 / 0.6
CKB60	60 / 2.4"		2.5 / 36	58 / 2.3"	120 / 4.7"	0.35 / 0.8
CKB75	75 / 3"		2.5 / 36	69 / 2.7"	140 / 5.5"	0.45 / 0.9
CKB100	100 / 4"		2.5 / 36	88 / 3.5"	160 / 6.2"	0.6 / 1.3
CKB150	150 / 6"		2.5 / 36	90 / 3.6"	200 / 7.8"	1.1 / 2.4
CKB200	200 / 8"		2.5 / 36	138 / 5.4"	200 / 7.8"	1.6 / 3.5
CKB250	250 / 10"		2.5 / 36	180 / 7.1"	250 / 9.8"	2.2 / 4.8
CKB300	300 / 12"		2.5 / 36	225 / 8.9"	200 / 7.8"	3.5 / 7.1
CKB100150	100 / 4"	50 / 6"	2.5 / 36	88 / 3.5"	200 / 7.8"	0.7 / 1.5
CKB150200	50 / 6"	200 / 8"	2.5 / 36	138 / 5.4"	200 / 7.8"	2.0 / 4.4
CKB200250	200 / 8"	250 / 10"	2.5 / 36	180 / 7.1"	250 / 9.8"	2.9 / 6.3
CKB250300	250 / 10"	300 / 12"	2.5 / 36	225 / 8.9"	250 / 9.8"	3.2 / 7.0
CKB300350	300 / 12"	350 / 14"	2.5 / 36	280 / 11"	350 / 13.7"	4.0 / 8.8

# High Pressure Pipe Plugs



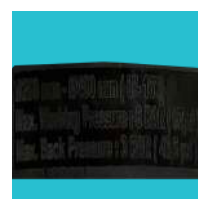
TAPASAN High Pressure Pipe Plugs used to temporarily blocking the pipelines with high back pressure. It is produced by vulcanizing SBR+NR rubber and high strength fabrics. between -30°C and +70°C temperature resistant. It is the ideal product type for blocking lines with a water height of 10m and above. They are resistant up to 60m (6 Bar) back pressure.

\*It can be produced with NBR rubber resistant to gas, petroleum and derivatives.

Product Code : YKB



Connection Type (R 1/4")



Technical Details Label



Friction Increasing Design

Product Code	Size Usage Range		Max. Working Pressure	Deflated Plug Dimensions		Back Pressure	Approx. Weight
	Min. Diameter	Max. Diameter		Diameter	Total Length		
	(mm) / (inch)	(mm) / (inch)		(mm) / (inch)	(mm) / (inch)		
YKB70100	70 / 2.8"	100 / 4"	6.0 / 87	68 / 2.6"	375 / 14.7"	3.0 / 44	0.8 / 1.7
YKB100	100 / 4"		10.0 / 145	91 / 3.5"	550 / 21.6"	6.0 / 87	1.5 / 3.3
YKB100150	100 / 4"	150 / 6"	6.0 / 87	91 / 3.5"	550 / 21.6"	3.0 / 44	1.6 / 3.5
YKB150	150 / 6"		10.0 / 145	140 / 5.5"	550 / 21.6"	6.0 / 87	2.6 / 5.7
YKB150200	150 / 6"	200 / 8"	6.0 / 87	140 / 5.5"	550 / 21.6"	3.0 / 44	2.8 / 6.1
YKB200	200 / 8"		10.0 / 145	187 / 7.3"	650 / 25.5"	6.0 / 87	3.7 / 8.1
YKB200300	200 / 8"	300 / 12"	6.0 / 87	187 / 7.3"	650 / 25.5"	3.0 / 44	4.0 / 8.8
YKB300	300 / 12"		10.0 / 145	187 / 7.3"	800 / 31.4"	6.0 / 87	9.5 / 20.9
YKB300400	300 / 12"	400 / 16"	6.0 / 87	286 / 11.2"	850 / 33.4"	3.0 / 44	10.0 / 22.0
YKB375	375 / 15"		10.0 / 145	361 / 14.2"	1000 / 39.3"	6.0 / 87	15.2 / 33.5
YKB375500	375 / 15"	500 / 20"	6.0 / 87	361 / 14.2"	1000 / 39.3"	3.0 / 44	16.0 / 35.2
YKB500	500 / 20"	600 / 24"	10.0 / 145	485 / 19.0"	1100 / 43.3"	6.0 / 87	26.0 / 57.3
YKB500600	500 / 20"	600 / 24"	6.0 / 87	485 / 19.0"	1100 / 43.3"	3.0 / 44	30.0 / 66.1
YKB600	600 / 24"		10.0 / 145	586 / 23.0"	1300 / 51.1"	6.0 / 87	35.0 / 77.1
YKB600700	600 / 24"	700 / 28"	6.0 / 87	586 / 23.0"	1300 / 51.1"	3.0 / 44	35.0 / 77.1
YKB800	800 / 32"		10.0 / 145	782 / 30.7"	1300 / 51.1"	6.0 / 87	48.0 / 106
YKB8001000	800 / 32"	1000 / 40"	6.0 / 87	782 / 30.7"	1300 / 51.1"	3.0 / 44	54.0 / 119
YKB1200	1200 / 48"		5.0 / 72,5	1174 / 46.2"	1300 / 51.1"	3.0 / 44	80.0 / 176
YKB1400	1400 / 55"		4.0 / 58	1174 / 46.2"	1600 / 62.9"	2.0 / 29	95.0 / 209



# Egg-Shaped Pipe Plugs



TAPASAN Egg-Shaped Pipe Plugs are used for temporary blocking of egg (oval) type pipes. These are produced by vulcanizing SBR+NR rubber and high-strength fabrics. It is resistant to temperatures between -30°C and +70°C.

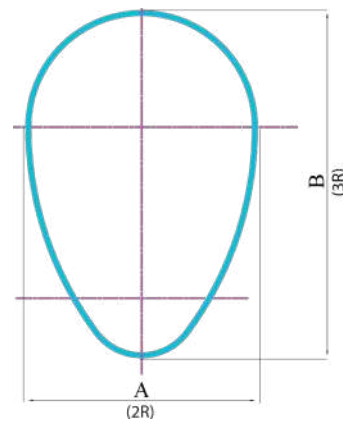
Product Code : EKB



Connection Type  
( R 1/4" )



Handle Design



Product Code	Size Usage Range		Max. Working Pressure (bar) / (psi)	Deflated Plug Dimensions			Approx. Weight (kg) / (lbs)
	A	B		A	B	Lenght	
	(mm) / (inch)	(mm) / (inch)		(mm) / (inch)	(mm) / (inch)	(mm) / (inch)	
EKB200300	150 / 6"	300 / 12"	1.0 / 15	180 / 7"	270 / 11"	1000 / 40"	18.4 / 40.4
EKB400600	400 / 16"	400 / 16"	1.0 / 15	380 / 15"	570 / 22"	1200 / 48"	18.6 / 40.9
EKB600900	600 / 24"	900 / 35"	1.0 / 15	580 / 23"	870 / 34"	1200 / 48"	18.8 / 41.3
EKB8001200	800 / 32"	1200 / 48"	1.0 / 15	780 / 31"	1170 / 46"	1200 / 48"	24.8 / 54.5

# Half Circle Pipe Plugs



TAPASAN Half Circle Pipe Plugs are used to temporarily blocking the pipelines with bendies in short pipe distances. It is produced by vulcanizing SBR+NR rubber and high strength fabrics. It is resistant to temperatures between -30°C and +70°C.

Product Code : OV



Connection Type  
( R 1/4" )



Oval Back Design  
for near of pipelines



Friction Increasing Design

Product Code	Size Usage Range		Max. Working Pressure (bar) / (psi)	Deflated Plug Dimensions		Back Pressure (bar) / (psi)	Approx. Weight (kg) / (lbs)
	Min. Diameter	Max. Diameter		Diameter	Total Length		
	(mm) / (inch)	(mm) / (inch)		(mm) / (inch)	(mm) / (inch)		
OV5070	50 / 2"	100 / 4"	2.5 / 36	45 / 1.8"	145 / 5.7"	0.5 / 7.3	0.2 / 0.4
OV70100	70 / 2.8"	150 / 6"	2.5 / 36	66 / 2.6"	160 / 6.2"	0.5 / 7.3	0.3 / 0.7
OV100150	100 / 4"	200 / 8"	2.5 / 36	93 / 6.4"	190 / 7.4"	0.5 / 7.3	0.6 / 1.3
OV150200	150 / 6"	300 / 12"	2.5 / 36	143 / 9.8"	265 / 10.4"	0.5 / 7.3	0.9 / 2.0

# Pipe Test Plugs



TAPASAN Pipe Test Plugs are products that help to test the pipeline during the temporary blocking of the pipelines and to ensure the evacuation of the fluid in the pipeline. These are produced by vulcanizing SBR+NR rubber and high-strength fabrics. It is resistant to temperatures between -30°C and +70°C. Thanks to its wide diameter range, it allows to block multiple pipe diameter ranges with a single product. Production can be provided starting from 25mm pipe diameter up to 2800mm diameter. The most important advantage is that it grasps the pipe diameter it will work at very low pressures and reaches high friction force values at working pressure.

\*It can be produced with NBR rubber resistant to gas, petroleum and derivatives.

Product Code : KTB



Connection Type  
( R 1/4\"/>



Technical Details  
Label



Warning  
Label



By-pass  
Design

Product Code	Size Usage Range		Max. Working Pressure (bar) / (psi)	Deflated Plug Dimensions		Back Pressure (bar) / (psi)	By-pass Size (inch)	Approx. Weight (kg) / (lbs)
	Min. Diameter	Max. Diameter		Diameter	Total Length			
	(mm) / (inch)	(mm) / (inch)						
KTB3570	35 / 1.4"	70 / 2.8"	3.0 / 44	33 / 1.3"	175 / 6.9"	0.5 / 7.3	3/10"	1.4 / 3.0
KTB50100	50 / 2"	100 / 4"	1.5 / 22	47 / 1.9"	350 / 13.8"	0.5 / 7.3	1/4"	0.5 / 1.1
KTB50100/2,5	50 / 2"	100 / 4"	2.5 / 36	47 / 1.9"	350 / 13.8"	1.0 / 15	1/4"	0.6 / 1.3
KTB70150	70 / 2.8"	150 / 6"	1.5 / 22	68 / 2.7"	400 / 16"	0.5 / 7.3	1/2"	1.3 / 2.8
KTB70150/2,5	70 / 2.8"	150 / 6"	2.5 / 36	68 / 2.7"	400 / 16"	1.0 / 15	1/2"	1.5 / 3.3
KTB100200	100 / 4"	200 / 8"	1.5 / 22	91 / 3.6"	600 / 24"	0.5 / 7.3	1"	2.6 / 5.7
KTB100200/2,5	100 / 4"	200 / 8"	2.5 / 36	91 / 3.6"	600 / 24"	1.0 / 15	1"	2.8 / 6.1
KTB150300	150 / 6"	300 / 12"	1.5 / 22	140 / 5.5"	600 / 24"	0.5 / 7.3	2"	4.8 / 10.5
KTB150300/2,5	150 / 6"	300 / 12"	2.5 / 36	140 / 5.5"	600 / 24"	1.0 / 15	2"	5.1 / 11.2
KTB200400	200 / 8"	400 / 16"	1.5 / 22	187 / 7.4"	700 / 27.5"	0.5 / 7.3	2"	8.5 / 18.7
KTB200400/2,5	200 / 8"	400 / 16"	2.5 / 36	187 / 7.4"	700 / 27.5"	1.0 / 15	2"	8.9 / 19.5
KTB200500	200 / 8"	500 / 20"	1.5 / 22	187 / 7.4"	850 / 33.5"	0.5 / 7.3	2"	9.5 / 20.9
KTB200500/2,5	200 / 8"	500 / 20"	2.5 / 36	187 / 7.4"	850 / 33.5"	1.0 / 15	2"	9.7 / 21.3
KTB300600	300 / 12"	600 / 24"	1.5 / 22	286 / 11.3"	900 / 35.5"	0.5 / 7.3	2"	13.4 / 29.4
KTB300600/2,5	300 / 12"	600 / 24"	2.5 / 36	286 / 11.3"	900 / 35.5"	1.0 / 15	2"	13.8 / 30.3
KTB375750	375 / 15"	750 / 30"	1.5 / 22	361 / 14.2"	1050 / 41.3"	0.5 / 7.3	2"	19.0 / 41.8
KTB375750/2,5	375 / 15"	750 / 30"	2.5 / 36	361 / 14.2"	1050 / 41.3"	1.0 / 15	2"	19.5 / 42.9
KTB400800	400 / 16"	800 / 32"	1.5 / 22	365 / 14"	1050 / 41.3"	0.5 / 7.3	2"	19.0 / 41.8
KTB400800/2,5	400 / 16"	800 / 32"	2.5 / 36	365 / 14"	1050 / 41.3"	1.0 / 15	2"	19.5 / 42.9
KTB5001000	500 / 20"	1000 / 40"	1.5 / 22	486 / 19"	1200 / 48"	0.5 / 7.3	2"	31.0 / 68.2
KTB5001000/2,5	500 / 20"	1000 / 40"	2.5 / 36	486 / 19"	1200 / 48"	1.0 / 15	2"	31.5 / 69.3
KTB5001200	500 / 20"	1200 / 48"	1.5 / 22	486 / 19"	1500 / 59"	0.5 / 7.3	2"	35.0 / 77.0
KTB6001200	600 / 24"	1200 / 48"	1.5 / 22	586 / 23.1"	1350 / 53.1"	0.5 / 7.3	2"	43.0 / 94.6
KTB6001200/2,5	600 / 24"	1200 / 48"	2.5 / 36	586 / 23.1"	1350 / 53.1"	0.8 / 11.6	2"	45.0 / 99.0
KTB6001600	600 / 24"	1600 / 64"	1.0 / 15	586 / 23.1"	2100 / 82.6"	0.3 / 4.4	2"	66.0 / 145.2
KTB6001600/1,5	600 / 24"	1600 / 64"	1.5 / 22	586 / 23.1"	2100 / 82.6"	0.4 / 5.8	2"	78.0 / 171.6
KTB8001600	800 / 32"	1600 / 64"	1.0 / 15	782 / 30.8"	1900 / 74.8"	0.5 / 7.3	2"	90.0 / 198.0
KTB8001800	800 / 32"	1800 / 72"	1.0 / 15	782 / 30.8"	2350 / 92.5"	0.4 / 5.8	2"	100.0 / 220.0
KTB8002000	800 / 32"	2000 / 80"	1.0 / 15	782 / 30.8"	2850 / 112"	0.4 / 5.8	2"	115.0 / 253.0
KTB8002200	800 / 32"	2200 / 88"	1.0 / 15	782 / 30.8"	3350 / 131.8"	0.3 / 4.4	2"	126.0 / 277.2
KTB12002400	1200 / 48"	2400 / 96"	1.0 / 15	1172 / 46"	3200 / 125"	0.5 / 7.3	2"	206.0 / 453.2
KTB12002600	1200 / 48"	2600 / 104"	1.0 / 15	1172 / 46"	3200 / 125"	0.4 / 5.8	2"	220.0 / 484.0
KTB12002800	1200 / 48"	2800 / 110"	1.0 / 15	1172 / 46"	4200 / 165"	0.3 / 4.4	2"	240.0 / 528.0



# Double By-pass Pipe Test Plugs



Web Page



WhatsApp



E-mail

TAPASAN Pipe Test Plugs with Double By-pass are products that help to test the pipeline during the temporary blocking of the pipelines and to ensure the evacuation of the fluid in the pipeline. These are produced by vulcanizing SBR+NR rubber and high-strength fabrics. It is resistant to temperatures between -30°C and +70°C. Thanks to its wide diameter range, it allows to block multiple pipe diameter ranges with a single product. Production can be provided starting from 25mm pipe diameter up to 2800mm diameter. The biggest advantage is that, unlike standard test plugs, its double by-pass design allows testing with the help of a float while discharging.

\*It can be produced with NBR rubber resistant to gas, petroleum and derivatives.

Product Code : KTB.../D



Connection Type  
(R 1/4" ) & Storz



Technical Details  
Label



Warning  
Label



Double By-pass  
Design

Product Code	Size Usage Range		Max. Working Pressure (bar) / (psi)	Deflated Plug Dimensions		Back Pressure (bar) / (psi)	By-pass Size (inch)	Approx. Weight (kg) / (lbs)
	Min. Diameter	Max. Diameter		Diameter	Total Length			
	(mm) / (inch)	(mm) / (inch)						
KTB3570D	35 / 1.4"	70 / 2.8"	3.0 / 44	33 / 1.3"	175 / 6.9"	0.5 / 7.3	2x3/10"	1.4 / 3.0
KTB50100D	50 / 2"	100 / 4"	1.5 / 22	47 / 1.9"	350 / 13.8"	1.0 / 15	2x3/10"	0.5 / 1.1
KTB50100/2,5D	50 / 2"	100 / 4"	2.5 / 36	47 / 1.9"	350 / 13.8"	0.5 / 7.3	2x3/10"	0.6 / 1.3
KTB70150D	70 / 2.8"	150 / 6"	1.5 / 22	68 / 2.7"	400 / 16"	1.0 / 15	2x1/4"	1.3 / 2.8
KTB70150/2,5D	70 / 2.8"	150 / 6"	2.5 / 36	68 / 2.7"	400 / 16"	0.5 / 7.3	2x1/4"	1.5 / 3.3
KTB100200D	100 / 4"	200 / 8"	1.5 / 22	91 / 3.6"	600 / 24"	1.0 / 15	2x1/2"	2.6 / 5.7
KTB100200/2,5D	100 / 4"	200 / 8"	2.5 / 36	91 / 3.6"	600 / 24"	0.5 / 7.3	2x1/2"	2.8 / 6.1
KTB150300D	150 / 6"	300 / 12"	1.5 / 22	140 / 5.5"	600 / 24"	1.0 / 15	2x1"	4.8 / 10.5
KTB150300/2,5D	150 / 6"	300 / 12"	2.5 / 36	140 / 5.5"	600 / 24"	0.5 / 7.3	2x1"	5.1 / 11.2
KTB200400D	200 / 8"	400 / 16"	1.5 / 22	187 / 7.4"	700 / 27.5"	1.0 / 15	2x1"	8.5 / 18.7
KTB200400/2,5D	200 / 8"	400 / 16"	2.5 / 36	187 / 7.4"	700 / 27.5"	0.5 / 7.3	2x1"	8.9 / 19.5
KTB200500D	200 / 8"	500 / 20"	1.5 / 22	187 / 7.4"	850 / 33.5"	1.0 / 15	2x1"	9.5 / 20.9
KTB200500/2,5D	200 / 8"	500 / 20"	2.5 / 36	187 / 7.4"	850 / 33.5"	0.5 / 7.3	2x1"	9.7 / 21.3
KTB300600D	300 / 12"	600 / 24"	1.5 / 22	286 / 11.3"	900 / 35.5"	1.0 / 15	2x2"	13.4 / 29.4
KTB300600/2,5D	300 / 12"	600 / 24"	2.5 / 36	286 / 11.3"	900 / 35.5"	0.5 / 7.3	2x2"	13.8 / 30.3
KTB375750D	375 / 15"	750 / 30"	1.5 / 22	361 / 14.2"	1050 / 41.3"	1.0 / 15	2x2"	19.0 / 41.8
KTB375750/2,5D	375 / 15"	750 / 30"	2.5 / 36	361 / 14.2"	1050 / 41.3"	0.5 / 7.3	2x2"	19.5 / 42.9
KTB400800D	400 / 16"	800 / 32"	1.5 / 22	365 / 14"	1050 / 41.3"	1.0 / 15	2x2"	19.0 / 41.8
KTB400800/2,5D	400 / 16"	800 / 32"	2.5 / 36	365 / 14"	1050 / 41.3"	0.5 / 7.3	2x2"	19.5 / 42.9
KTB5001000D	500 / 20"	1000 / 40"	1.5 / 22	486 / 19"	1200 / 48"	1.0 / 15	2x2"	31.0 / 68.2
KTB5001000/2,5D	500 / 20"	1000 / 40"	2.5 / 36	486 / 19"	1200 / 48"	1.0 / 15	2x2"	31.5 / 69.3
KTB5001200D	500 / 20"	1200 / 48"	1.5 / 22	486 / 19"	1500 / 59"	0.5 / 7.3	2x2"	35.0 / 77.0
KTB6001200D	600 / 24"	1200 / 48"	1.5 / 22	586 / 23.1"	1350 / 53.1"	0.3 / 4.4	2x2"	43.0 / 94.6
KTB6001200/2,5D	600 / 24"	1200 / 48"	2.5 / 36	586 / 23.1"	1350 / 53.1"	0.8 / 11.6	2x2"	45.0 / 99.0
KTB6001600D	600 / 24"	1600 / 64"	1.0 / 15	586 / 23.1"	2100 / 82.6"	0.3 / 4.4	2x2"	66.0 / 145.2
KTB6001600/1,5D	600 / 24"	1600 / 64"	1.5 / 22	586 / 23.1"	2100 / 82.6"	0.4 / 5.8	2x2"	78.0 / 171.6
KTB8001600D	800 / 32"	1600 / 64"	1.0 / 15	782 / 30.8"	1900 / 74.8"	0.5 / 7.3	2x2"	90.0 / 198.0
KTB8001800D	800 / 32"	1800 / 72"	1.0 / 15	782 / 30.8"	2350 / 92.5"	0.4 / 5.8	2x2"	100.0 / 220.0
KTB8002000D	800 / 32"	2000 / 80"	1.0 / 15	782 / 30.8"	2850 / 112"	0.4 / 5.8	2x2"	115.0 / 253.0
KTB8002200D	800 / 32"	2200 / 88"	1.0 / 15	782 / 30.8"	3350 / 131.8"	0.3 / 4.4	2x2"	126.0 / 277.2
KTB12002400D	1200 / 48"	2400 / 96"	1.0 / 15	1172 / 46"	3200 / 125"	0.5 / 7.3	2x2"	206.0 / 453.2
KTB12002600D	1200 / 48"	2600 / 104"	1.0 / 15	1172 / 46"	3200 / 125"	0.4 / 5.8	2x2"	220.0 / 484.0
KTB12002800D	1200 / 48"	2800 / 110"	1.0 / 15	1172 / 46"	4200 / 165"	0.3 / 4.4	2x2"	240.0 / 528.0



# High Pressure Pipe Test Plugs



Web Page



WhatsApp

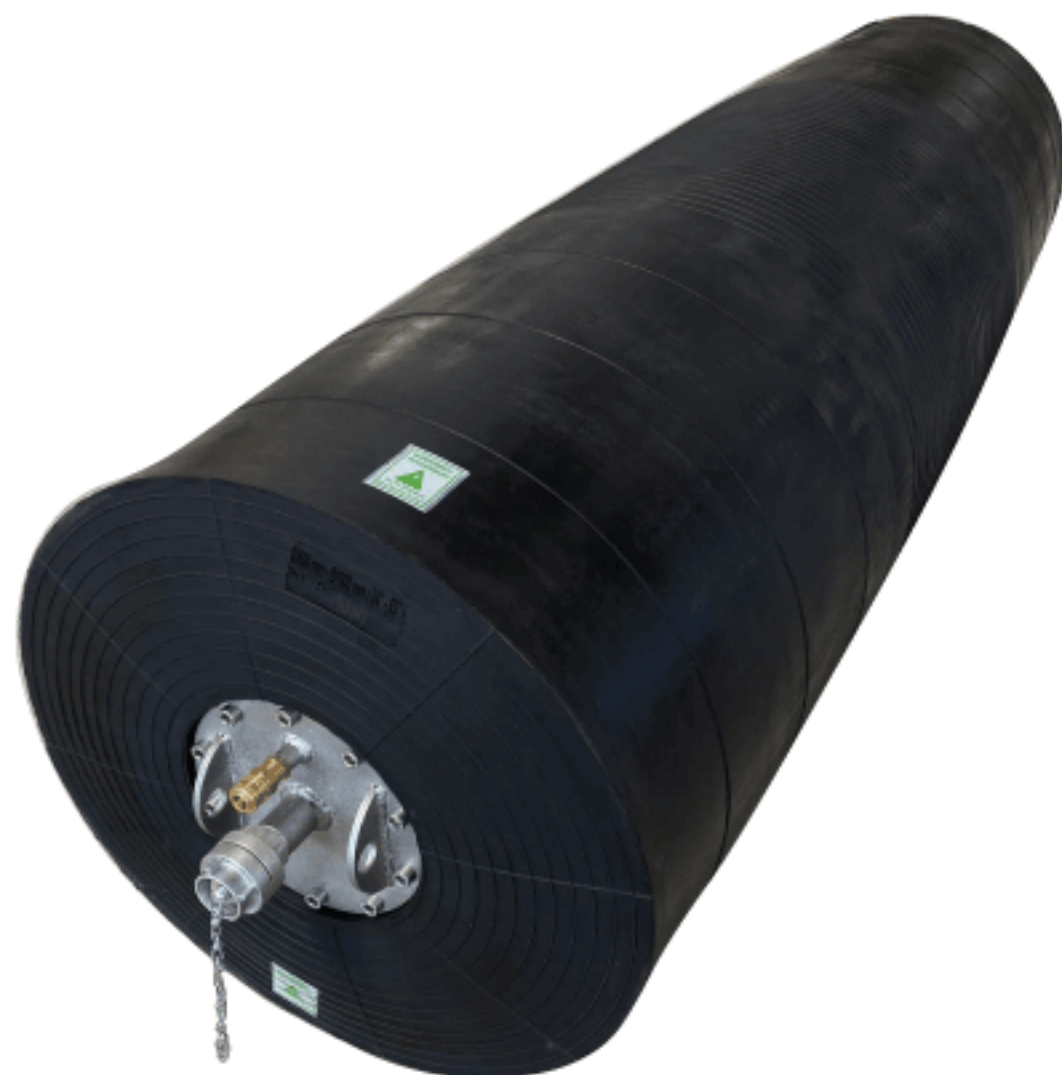


E-mail

TAPASAN High Pressure Pipe Test Plugs used to temporarily blocking the pipelines and with high back pressure and to ensure the evacuation of the fluid in the pipeline. It is produced by vulcanizing SBR+NR rubber and high strength fabrics. between -30°C and +70°C temperature resistant. It is the ideal product type for blocking lines with a water height of 10m and above. They are resistant up to 60m (6 Bar) back pressure.

\*It can be produced with NBR rubber resistant to gas, petroleum and derivatives.

Product Code : YKTB



Connection Type  
( R 1/4" ) & Storz



Technical Details  
Label



Warning  
Label



By-pass  
Design

Product Code	Size Usage Range		Max. Working Pressure (bar) / (psi)	Deflated Plug Dimensions		Back Pressure (bar) / (psi)	By-pass Size (inch)
	Min. Diameter	Max. Diameter		Diameter	Total Length		
	(mm) / (inch)	(mm) / (inch)					
YKTB70100	70 / 2.8"	100 / 4"	6.0 / 87	68 / 2.6"	375 / 14.7"	3.0 / 44	1/2"
YKTB100	100 / 4"		10.0 / 145	91 / 3.5"	550 / 21.6"	6.0 / 87	1"
YKTB100150	100 / 4"	150 / 6"	6.0 / 87	91 / 3.5"	550 / 21.6"	3.0 / 44	1"
YKTB150	150 / 6"		10.0 / 145	140 / 5.5"	550 / 21.6"	6.0 / 87	2"
YKTB150200	150 / 6"	200 / 8"	6.0 / 87	140 / 5.5"	550 / 21.6"	3.0 / 44	2"
YKTB200	200 / 8"		10.0 / 145	187 / 7.3"	650 / 25.5"	6.0 / 87	2"
YKTB200300	200 / 8"	300 / 12"	6.0 / 87	187 / 7.3"	650 / 25.5"	3.0 / 44	2"
YKTB300	300 / 12"		10.0 / 145	187 / 7.3"	800 / 31.4"	6.0 / 87	2"
YKTB300400	300 / 12"	400 / 16"	6.0 / 87	286 / 11.2"	850 / 33.4"	3.0 / 44	2"
YKTB375	375 / 15"		10.0 / 145	361 / 14.2"	1000 / 39.3"	6.0 / 87	2"
YKTB375500	375 / 15"	500 / 20"	6.0 / 87	361 / 14.2"	1000 / 39.3"	3.0 / 44	2"
YKTB500	500 / 20"	600 / 24"	10.0 / 145	485 / 19.0"	1100 / 43.3"	6.0 / 87	2"
YKTB500600	500 / 20"	600 / 24"	6.0 / 87	485 / 19.0"	1100 / 43.3"	3.0 / 44	2"
YKTB600	600 / 24"		10.0 / 145	586 / 23.0"	1300 / 51.1"	6.0 / 87	2"
YKTB600700	600 / 24"	700 / 28"	6.0 / 87	586 / 23.0"	1300 / 51.1"	3.0 / 44	2"
YKTB800	800 / 32"		10.0 / 145	782 / 30.7"	1300 / 51.1"	6.0 / 87	2"
YKTB8001000	800 / 32"	1000 / 40"	6.0 / 87	782 / 30.7"	1300 / 51.1"	3.0 / 44	2"
YKTB1200	1200 / 48"		5.0 / 72,5	1174 / 46.2"	1300 / 51.1"	3.0 / 44	2"
YKTB1400	1400 / 55"		4.0 / 58	1174 / 46.2"	1600 / 62.9"	2.0 / 29	2"

# Large By-pass Test Plugs



TAPASAN Pipe Test Plugs with Large By-pass are products that help test the pipeline during the temporary blocking of the pipelines and ensure the discharging of the flow in the pipeline. These are produced by vulcanizing SBR+NR rubber and high-strength fabrics. It is resistant to temperatures between -30°C and +70°C. The biggest advantage is to provide rapid evacuation of the flow in the pipeline thanks to its large bypass.

Product Code : EKTB



Product Code	Size Usage Range		Max. Working Pressure (bar) / (psi)	Deflated Plug Dimensions		By-pass Size (inch)	Approx. Weight (kg) / (lbs)	Back Pressure (bar) / (psi)
	Min. Diameter	Max. Diameter		Diameter	Lenght			
	(mm) / (inch)	(mm) / (inch)		(mm) / (inch)	(mm) / (inch)			
LKTB100200	100 / 4"	200 / 8"	1.5 / 22	94 / 3.7"	380 / 14.9"	2"	9.6 / 21.1	0.5 / 7.3
LKTB150300	150 / 6"	300 / 12"	1.5 / 22	145 / 5.7"	640 / 25.1"	2"	10.5 / 23.1	0.5 / 7.3
LKTB200500	200 / 8"	500 / 20"	1.5 / 22	192 / 7.6"	640 / 25.1"	4"	14 / 30.8	0.5 / 7.3
LKTB300600	300 / 12"	600 / 24"	1.5 / 22	290 / 11.4"	640 / 25.1"	4"	18.8 / 41.4	0.5 / 7.3
LKTB375750	375 / 15"	750 / 30"	1.5 / 22	354 / 14"	800 / 31.4"	4"	25.3 / 55.7	0.5 / 7.3
LKTB500800	500 / 20"	800 / 32"	1.5 / 22	442 / 17.4"	700 / 27.5"	6"	32.9 / 72.4	0.5 / 7.3
LKTB5001200	500 / 20"	1200 / 48"	1.5 / 22	442 / 17.4"	950 / 37.4"	8"	45.9 / 101	0.5 / 7.3

# Professional By-pass Test Plugs



TAPASAN Pipe Test Plugs are products that help to test the pipeline during the temporary blinding of the pipelines and to ensure the evacuation of the fluid in the pipeline. These are produced by vulcanizing SBR+NR rubber and high-strength fabrics. It is resistant to temperatures between -30°C and +70°C. The most important advantage is testing by a float in sewer.

Product Code : SKTB



Product Code	Size Usage Range		Max. Working Pressure (bar) / (psi)	Deflated Plug Dimensions		Back Pressure (bar) / (psi)	By-pass Size (inch)	Approx. Weight (kg) / (lbs)
	Min. Diameter	Max. Diameter		Diameter	Total Lenght			
	(mm) / (inch)	(mm) / (inch)		(mm) / (inch)	(mm) / (inch)			
SKTB70150	70 / 2.8"	150 / 6"	1.5 / 22	70 / 2.8"	400 / 15.7"	0.5 / 7.3	1"	1.9 / 4.1
SKTB100150	100 / 4"	150 / 6"	1.5 / 22	87 / 3.4"	260 / 10.2"	0.5 / 7.3	1"	1.9 / 4.1
SKTB100200	100 / 4"	200 / 8"	1.5 / 22	94 / 3.7"	400 / 15.7"	0.5 / 7.3	1"	2.1 / 4.6
SKTB125200	125 / 5"	200 / 8"	1.5 / 22	117 / 4.6"	260 / 10.2"	0.5 / 7.3	1"+1/4"	2.1 / 4.6
SKTB200500	200 / 8"	500 / 20"	1.5 / 22	191 / 7.5"	680 / 26.7"	0.5 / 7.3	1"+2"	6.8 / 14.9
SKTB300600	300 / 12"	600 / 24"	1.5 / 22	240 / 9.4"	680 / 26.7"	0.5 / 7.3	1"+2"	15.2 / 33.4
SKTB375750	375 / 15"	750 / 30"	1.5 / 22	354 / 14"	800 / 31.4"	0.5 / 7.3	2x1"+3"	20.5 / 45.1
SKTB500800	500 / 20"	800 / 32"	1.5 / 22	440 / 17.3"	800 / 31.4"	0.5 / 7.3	2x1"+4"	35.0 / 77.0
SKTB5001200	500 / 20"	1200 / 48"	1.5 / 22	440 / 17.3"	990 / 38.9"	0.5 / 7.3	2x1"+4"	46.8 / 103.2



# Mini Test Plugs



TAPASAN Mini Pipe Test Plugs are products that help test the pipeline and ensure the evacuation of the fluid in the pipeline during the temporary blinding of short pipelines. These are produced by vulcanizing SBR+NR rubber and high-strength fabrics. It is resistant to temperatures between -30°C and +70°C. Its biggest advantage is that it is ideal for testing lines where standard pipe test plugs are long and for evacuating the fluid.

\*It can be produced with NBR rubber resistant to gas, petroleum and derivatives.

Product Code : KTBM



Connection Type



By-pass Design

Product Code	Size Usage Range		Max. Working Pressure	Deflated Plug Dimensions		By-pass Size	Approx. Weight	Back Pressure
	Min. Diameter	Max. Diameter		Diameter	Lenght			
	(mm) / (inch)	(mm) / (inch)		(mm) / (inch)	(mm) / (inch)			
KTBM50100	50 / 2"	100 / 4"	2.5 / 36	47 / 1.9"	250 / 9.8"	1/2"	0.6 / 1.3	0.5 / 7.3
KTBM100200	100 / 4"	200 / 8"	3.0 / 44	88 / 3.4"	270 / 10.6"	1/2"	1.2 / 2.6	0.5 / 7.3
KTBM150300	150 / 6"	300 / 12"	2.5 / 36	138 / 5.4"	370 / 14.5"	1"	2.6 / 5.6	0.5 / 7.3
KTBM200400	200 / 8"	400 / 16"	2.5 / 36	187 / 7.4"	500 / 19.6"	1"	4.7 / 10.4	0.5 / 7.3

# Bagel Shaped Test Plugs



TAPASAN Bagel Shaped Pipe Test Plugs are short test plugs that allow low pressure manhole testing. It is produced by vulcanizing SBR+NR rubber and high-strength fabrics. It is resistant to temperatures between -30°C and +70°C. Its biggest advantage is that it is designed to be lighter and easier to transport compared to manhole test products.

Product Code : SKB



Connections



Bagel Shaped Design

Product Code	Size Usage Range		Max. Working Pressure	Deflated Plug Dimensions		By-pass Size	Approx. Weight
	Min. Diameter	Max. Diameter		Diameter	Total Lenght		
	(mm) / (inch)	(mm) / (inch)		(mm) / (inch)	(mm) / (inch)		
SKB300400	300 / 12"	400 / 16"	1.5 / 22	282 / 11"	252 / 9.9"	2x1/4"	5 / 11
SKB400500	400 / 16"	500 / 20"	1.5 / 22	382 / 15"	252 / 9.9"	2x1/4"	6.5 / 14.2
SKB500600	500 / 20"	600 / 24"	1.5 / 22	482 / 19"	252 / 9.9"	2x1/4"	8 / 18
SKB600700	600 / 24"	700 / 28"	1.5 / 22	582 / 23"	252 / 9.9"	2x1/4"	10 / 22
SKB700800	700 / 28"	800 / 32"	1.5 / 22	682 / 27"	252 / 9.9"	2x1/4"	12 / 26
SKB800900	800 / 32"	900 / 35"	1.5 / 22	782 / 31"	252 / 9.9"	2x1/4"	13.5 / 29.7
SKB9001050	900 / 35"	1050 / 41"	1.5 / 22	882 / 34"	252 / 9.9"	2x1/4"	15 / 33

# Steam Pressure Test Plugs



TAPASAN Steam Pressure Pipe Test Plugs are high-strength products that allow blocking and evacuation of steam in pipelines where steam pressure is present. They are produced by vulcanizing SBR+NR rubber and high-strength fabrics. Thanks to its large by-pass diameters, it allows rapid steam evacuation.

\*It can be produced with NBR rubber resistant to gas, petroleum and derivatives.

Product Code : BKTB



Connection Type



Steam Resistance Surface

Product Code	Size Usage Range		Max. Working Pressure	Deflated Plug Dimensions		By-pass Size
	Min. Diameter	Max. Diameter		Diameter	Total Length	
	(mm) / (inch)	(mm) / (inch)		(mm) / (inch)	(mm) / (inch)	
BKTB100200	100 / 4"	200 / 8"	2.8 / 40	87 / 3.4"	560 / 22"	1"-2"
BKTB150250	150 / 6"	250 / 9,8"	2.8 / 40	135 / 5.3"	560 / 22"	1"-2"-3"
BKTB200300	200 / 8"	300 / 12"	2.8 / 40	165 / 6.5"	560 / 22"	2"-3"-4"
BKTB250400	250 / 9,8"	300 / 12"	2.8 / 40	216 / 8.5"	560 / 22"	2"-3"-4"
BKTB300450	300 / 12"	450 / 17,7"	2.8 / 40	254 / 10"	560 / 22"	2"-3"-4"
BKTB375550	375 / 15"	550 / 21,6"	2.8 / 40	343 / 13.3"	610 / 24"	2"-3"-4"
BKTB450600	450 / 17,7"	600 / 24"	2.8 / 40	406 / 16"	622 / 24."	2"-3"-4"

# Manhole Test Plugs



TAPASAN Manhole Test Plugs are short test plugs that allow manhole testing. These are produced by vulcanizing SBR+NR rubber and high-strength fabrics. It is resistant to temperatures between -30°C and +70°C. Its biggest advantage is that it is produced in accordance with various manhole diameters and designs.

Product Code : RTB



Connection Type



Technical Detail Label



High Friction Surface

Product Code	Size Usage Range		Max. Working Pressure	Deflated Plug Dimensions		By-pass Size	Approx. Weight
	Min. Diameter	Max. Diameter		Diameter	Total Length		
	(mm) / (inch)	(mm) / (inch)		(mm) / (inch)	(mm) / (inch)		
RTB6006501	600 / 24"	650 / 25,6"	1.5 / 22	582 / 23"	250 / 9.8"	2x1/4"	18.4 / 40.4
RTB6006502	600 / 24"	650 / 25,6"	1.5 / 22	582 / 23"	250 / 9.8"	1"	18.6 / 40.9
RTB6006503	600 / 24"	650 / 25,6"	1.5 / 22	582 / 23"	250 / 9.8"	2"	18.8 / 41.3
RTB8008501	800 / 32"	850 / 33,5"	1.5 / 22	782 / 31"	250 / 9.8"	2x1/4"	24.8 / 54.5
RTB8008502	800 / 32"	850 / 33,5"	1.5 / 22	782 / 31"	250 / 9.8"	1"	24.9 / 54.7
RTB8008503	800 / 32"	850 / 33,5"	1.5 / 22	782 / 31"	250 / 9.8"	2"	25.1 / 55.2



# Egg-Shaped Test Plugs



Web Page



WhatsApp



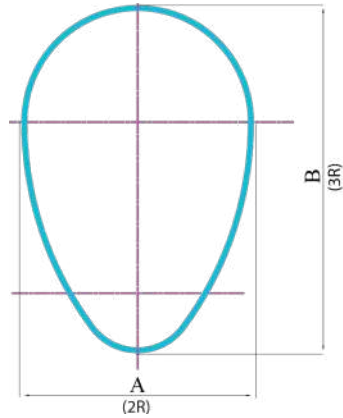
E-mail

TAPASAN Egg-Shaped Test Plugs are used for testing and evacuation of egg (oval) type pipelines. These are produced by vulcanizing SBR+NR rubber and high-strength fabrics. It is resistant to temperatures between -30°C and +70°C.

Product Code : EKTB



Connection Type



Product Code	Size Usage Range		Max. Working Pressure	Deflated Plug Dimensions			By-pass Size	Approx. Weight
	A	B		A	B	Length		
	(mm) / (inch)	(mm) / (inch)		(mm) / (inch)	(mm) / (inch)	(mm) / (inch)		
EKTB200300	150 / 6"	300 / 12"	1.0 / 15	180 / 7"	270 / 11"	1000 / 39.3"	2"	18.4 / 40.4
EKTB400600	400 / 16"	400 / 16"	1.0 / 15	380 / 15"	570 / 22"	1200 / 47.2"	2"	18.6 / 40.9
EKTB600900	600 / 24"	900 / 35"	1.0 / 15	580 / 23"	870 / 34"	1200 / 47.2"	2"	18.8 / 41.3
EKTB8001200	800 / 32"	1200 / 48"	1.0 / 15	780 / 31"	1170 / 46"	1200 / 47.2"	2"	24.8 / 54.5

# Home Pipeline Test Plugs



Web Page



WhatsApp



E-mail

TAPASAN Home Pipeline Test Plugs are products that allow testing of small diameter house pipelines and fluid discharge. These are produced by vulcanizing SBR+NR rubber and high-strength fabrics. It is resistant to temperatures between -30°C and +70°C. Its biggest advantage is that it allows testing of a long-distance range, thanks to the inflation hose connection between the plugs.

Product Code : EHTB



Connection Types



By-pass Design

Product Code	Size Usage Range		Max. Working Pressure	Deflated Plug Dimensions		By-pass Size	Approx. Weight
	Min. Diameter	Max. Diameter		Diameter	Length		
	(mm) / (inch)	(mm) / (inch)		(mm) / (inch)	(mm) / (inch)		
EHTB70150	70 / 2.8"	150 / 6"	2.5 / 36	67 / 2.6"	370 / 14.5"	1/4"	4.2 / 9.2
EHTB100200	100 / 4"	200 / 8"	2.5 / 36	90 / 3.5"	500 / 19.6"	1/4"	5.7 / 12.5

# C Test Plugs



TAPASAN C Test Plugs are used for testing and evacuation of pipelines with short pipe lengths. These are produced by vulcanizing SBR+NR rubber and high-strength fabrics. between -30°C and +70°C temperature resistant. Thanks to its extra short length, it can be easily used in house pipelines and short pipe distances.

\*It can be produced with NBR rubber resistant to gas, petroleum and derivatives.

Product Code : CKTB



Connection Type



Small By-pass Design



Technical Detail Label

Product Code	Size Usage Range		Max. Working Pressure	Deflated Plug Dimensions		By-pass Size
	Min. Diameter	Max. Diameter		Diameter	Lenght	
	(mm) / (inch)	(mm) / (inch)		(mm) / (inch)	(mm) / (inch)	
CKTB3040	30 / 1.1"	40 / 1.5"	2.5 / 36	29 / 1.1"	50 / 1.9"	1/8"
CKTB4050	40 / 1.5"	50 / 2"	2.5 / 36	38 / 1.4"	90 / 3.5"	1/8"
CKTB5075	50 / 2"	75 / 3"	2.5 / 36	48 / 1.8"	110 / 4.3"	1/4"
CKTB60	60 / 2,4"		2.5 / 36	58 / 2.2"	120 / 4.7"	1/4"
CKTB75	75 / 3"		2.5 / 36	68 / 2.6"	140 / 5.5"	1/2"
CKTB70100	70 / 2.8"	100 / 4"	2.5 / 36	68 / 2.6"	185 / 7.2"	1/2"
CKTB100	100 / 4"		2.5 / 36	88 / 3.4"	160 / 6.2"	1/2"
CKTB100150	100 / 4"	150 / 6"	2.5 / 36	88 / 3.4"	185 / 7.2"	1/2"
CKTB150	150 / 6"		2.5 / 36	138 / 5.4"	160 / 6.2"	1"
CKTB150200	150 / 6"	200 / 8"	2.5 / 36	138 / 5.4"	200 / 7.8"	1"
CKTB200250	200 / 8"	250 / 10"	2.5 / 36	180 / 7.0"	250 / 9.8"	1"
CKTB250300	250 / 10"	300 / 12"	2.5 / 36	182 / 7.1"	300 / 11.8"	1"
CKTB300	300 / 12"		2.5 / 36	282 / 11.1"	300 / 11.8"	1"
CKTB300350	300 / 12"	350 / 14"	2.5 / 36	282 / 11.1"	350 / 13.7"	1"

# Single Size Test Plugs with Metal



Single Size Test Plug with Metal is used for small lenght joint area for blocking and testing. These are produced by vulcanizing SBR+NR rubber and high-strength fabrics. between -30°C and +70°C temperature resistant.

Product Code : TEK



Product Code	Usage Diameter	Max. Working Pressure	Deflated Plug Dimensions		By-pass Size
			Diameter	Lenght	
			(mm) / (inch)	(mm) / (inch)	
TEK200	200 / 8"	6 / 87	160 / 6"	110 / 4"	1"
TEK300	300 / 12"	6 / 87	260 / 10"	110 / 4"	2"
TEK400	400 / 16"	6 / 87	360 / 14"	110 / 4"	2"
TEK500	500 / 20"	6 / 87	460 / 18"	110 / 4"	2"
TEK600	600 / 24"	6 / 87	560 / 22"	110 / 4"	2"
TEK700	700 / 28"	6 / 87	660 / 26"	110 / 4"	2"
TEK800	800 / 32"	6 / 87	760 / 30"	110 / 4"	2"
TEK900	900 / 35"	6 / 87	860 / 34"	110 / 4"	2"
TEK1000	1000 / 40"	6 / 87	960 / 38"	110 / 4"	2"
TEK1100	1100 / 43"	6 / 87	1060 / 42"	110 / 4"	2"
TEK1200	1200 / 48"	6 / 87	1160 / 46"	110 / 4"	2"



# Joint Test Plugs



TAPASAN Joint Test Plugs are used to provide leaking test at the junction points of GRP and concrete pipes. It is produced by vulcanizing SBR+NR rubber and high-strength fabrics. It is resistant to temperatures between -30°C and +70°C. Thanks to its wheeled structure, it enables easy mobility within the line.

\*It can be produced with NBR rubber resistant to gas, petroleum and derivatives.

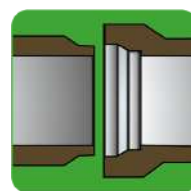
Product Code : CKTB



Connection Type



Wheels Design



Pipe Type

Product Code	Pipe Diameter (mm) / (inch)	Max. Working Pressure (bar) / (psi)	Deflated Plug Dimensions		Approx. Weight (kg) / (lbs)
			Diameter (mm) / (inch)	Lenght (mm) / (inch)	
ET100	100 / 4"	2.5 / 36	70 / 2.8"	200 / 7.8" + Joint Length	6.0 / 13.2
ET200	200 / 8"	2.5 / 36	150 / 6"	250 / 9.8" + Joint Length	7.0 / 15.4
ET300	300 / 12"	2.5 / 36	250 / 10"	250 / 9.8" + Joint Length	10.5 / 23.1
ET400	400 / 16"	2.5 / 36	350 / 14"	300 / 12" + Joint Length	15.5 / 34.1
ET500	500 / 20"	2.5 / 36	435 / 17"	300 / 12" + Joint Length	30.0 / 66.0
ET600	600 / 24"	2.5 / 36	550 / 22"	300 / 12" + Joint Length	44.0 / 96.8
ET700	700 / 28"	2.5 / 36	650 / 26"	300 / 12" + Joint Length	51.5 / 113.3
ET800	800 / 32"	2.5 / 36	750 / 30"	300 / 12" + Joint Length	59.0 / 129.8
ET900	900 / 36"	2.5 / 36	850 / 34"	300 / 12" + Joint Length	69.2 / 152.2
ET1000	1000 / 40"	2.5 / 36	950 / 38"	300 / 12" + Joint Length	79.4 / 174.6
ET1100	1100 / 44"	2.5 / 36	1050 / 42"	300 / 12" + Joint Length	89.1 / 196.0
ET1200	1200 / 48"	2.5 / 36	1150 / 46"	300 / 12" + Joint Length	98.8 / 217.3
ET1300	1300 / 52"	2.5 / 36	1250 / 50"	300 / 12" + Joint Length	105.6 / 232.3
ET1400	1400 / 56"	2.5 / 36	1350 / 54"	300 / 12" + Joint Length	112.5 / 247.5
ET1500	1500 / 60"	2.5 / 36	1450 / 58"	300 / 12" + Joint Length	126.3 / 277.8
ET1600	1600 / 64"	2.5 / 36	1550 / 62"	300 / 12" + Joint Length	140.0 / 308.6
ET1700	1700 / 68"	2.5 / 36	1650 / 66"	300 / 12" + Joint Length	148.6 / 326.9
ET1800	1800 / 72"	2.5 / 36	1750 / 70"	300 / 12" + Joint Length	157.3 / 346.0
ET1900	1900 / 76"	2.5 / 36	1850 / 74"	300 / 12" + Joint Length	164.0 / 360.8
ET2000	2000 / 80"	2.5 / 36	1950 / 78"	300 / 12" + Joint Length	175.0 / 385.0
ET2100	2100 / 84"	2.5 / 36	2050 / 82"	300 / 12" + Joint Length	184.0 / 404.8

# Mini Lateral Packers



TAPASAN Mini Lateral Packers are products that allow point repairs on pipelines. These are produced by vulcanizing SBR+NR rubber and high-strength fabrics. It is resistant to temperatures between -30°C and +70°C.

\*Can be produced as a Push Rod compatible head.

Product Code : TB



Connection Type



Back Hook Design



Patch Length Stripes



Push Rod Connection

Product Code	Size Usage Range		Max. Working Pressure (bar) / (psi)	Deflated Plug Dimensions			Approx. Weight (kg) / (lbs)
	Min. Diameter (mm) / (inch)	Max. Diameter (mm) / (inch)		Diameter (mm) / (inch)	Lenght (mm) / (inch)	Total Lenght (mm) / (inch)	
	TB255006	25 / 1"		50 / 2"	3.0 / 44	21 / 0.8"	
TB255010	25 / 1"	50 / 2"	3.0 / 44	21 / 0.8"	1000 / 39.3"	1170 / 46.1"	0.35 / 0.7
TB255015	25 / 1"	50 / 2"	3.0 / 44	21 / 0.8"	1500 / 59.0"	1670 / 65.7"	0.4 / 0.8
TB255020	25 / 1"	50 / 2"	3.0 / 44	21 / 0.8"	2000 / 78.7"	2170 / 85.4"	0.5 / 1.1
TB255030	25 / 1"	50 / 2"	3.0 / 44	21 / 0.8"	3000 / 118.1"	3170 / 124.8"	0.6 / 1.3
TB255040	25 / 1"	50 / 2"	3.0 / 44	21 / 0.8"	4000 / 157.4"	4170 / 164.2"	0.7 / 1.5
TB255050	25 / 1"	50 / 2"	3.0 / 44	21 / 0.8"	5000 / 196.8"	5170 / 203.5"	0.8 / 1.7
TB306010	30 / 1.2"	60 / 2.4"	3.0 / 44	25 / 1"	1000 / 39.3"	1170 / 46.1"	0.4 / 0.8
TB306015	30 / 1.2"	60 / 2.4"	3.0 / 44	25 / 1"	1500 / 59.0"	1670 / 65.7"	0.5 / 1.1
TB306020	30 / 1.2"	60 / 2.4"	3.0 / 44	25 / 1"	2000 / 78.7"	2170 / 85.4"	0.7 / 1.5
TB306030	30 / 1.2"	60 / 2.4"	3.0 / 44	25 / 1"	3000 / 118.1"	3170 / 124.8"	0.8 / 1.7
TB306040	30 / 1.2"	60 / 2.4"	3.0 / 44	25 / 1"	4000 / 157.4"	4170 / 164.2"	1.3 / 2.8
TB306050	30 / 1.2"	60 / 2.4"	3.0 / 44	25 / 1"	5000 / 196.8"	5170 / 203.5"	1.6 / 3.5
TB507010	50 / 2"	70 / 2.8"	3.0 / 44	34 / 1.3"	1000 / 39.3"	1170 / 46.1"	0.6 / 1.3
TB507015	50 / 2"	70 / 2.8"	3.0 / 44	34 / 1.3"	1500 / 59.0"	1670 / 65.7"	0.8 / 1.7
TB507020	50 / 2"	70 / 2.8"	3.0 / 44	34 / 1.3"	2000 / 78.7"	2170 / 85.4"	1.3 / 2.8
TB507030	50 / 2"	70 / 2.8"	3.0 / 44	34 / 1.3"	3000 / 118.1"	3170 / 124.8"	1.6 / 3.5
TB507040	50 / 2"	70 / 2.8"	3.0 / 44	34 / 1.3"	4000 / 157.4"	4170 / 164.2"	2.5 / 5.5
TB507050	50 / 2"	70 / 2.8"	3.0 / 44	34 / 1.3"	5000 / 196.8"	5170 / 203.5"	2.8 / 6.1



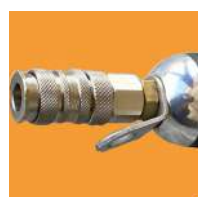
# Lateral Packers



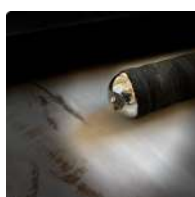
TAPASAN Lateral Packers are products that allow point repairs on pipelines. These are produced by vulcanizing SBR+NR rubber and high-strength fabrics. It is resistant to temperatures between -30°C and +70°C.

\*Can be produced as a Push Rod compatible head.

Product Code : TB



Connection Type



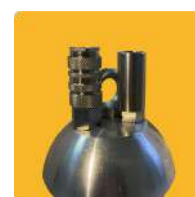
Back Hook Design



Patch Length Stripes



Push Rod Connection



Push Rod Connection

www.tapasan.net

Product Code	Size Usage Range		Max. Working Pressure (bar) / (psi)	Deflated Plug Dimensions			Approx. Weight (kg) / (lbs)
	Min. Diameter	Max. Diameter		Diameter	Lenght	Total Lenght	
	(mm) / (inch)	(mm) / (inch)		(mm) / (inch)	(mm) / (inch)	(mm) / (inch)	
TB7010006	70 / 2.8"	100 / 4"	3.0 / 44	43 / 1.7"	600 / 23.6"	870 / 34.2	0.6 / 1.3
TB7010010	70 / 2.8"	100 / 4"	3.0 / 44	43 / 1.7"	1000 / 39.3"	1170 / 46.1"	0.8 / 1.7
TB7010015	70 / 2.8"	100 / 4"	3.0 / 44	43 / 1.7"	1500 / 59.0"	1670 / 65.7"	1.1 / 2.4
TB7010020	70 / 2.8"	100 / 4"	3.0 / 44	43 / 1.7"	2000 / 78.7"	2170 / 85.4"	1.4 / 3.0
TB7010030	70 / 2.8"	100 / 4"	3.0 / 44	43 / 1.7"	3000 / 118.1"	3170 / 124.8"	2.0 / 4.4
TB7010040	70 / 2.8"	100 / 4"	3.0 / 44	43 / 1.7"	4000 / 157.4"	4170 / 164.2"	2.8 / 6.1
TB7010050	70 / 2.8"	100 / 4"	3.0 / 44	43 / 1.7"	5000 / 196.8"	5170 / 203.5"	3.4 / 7.5
TB8012510	80 / 3"	125 / 5"	3.0 / 44	45 / 1.7"	1000 / 39.3"	1170 / 46.1"	1.4 / 3.0
TB8012515	80 / 3"	125 / 5"	3.0 / 44	45 / 1.7"	1500 / 59.0"	1670 / 65.7"	2.0 / 4.4
TB8012520	80 / 3"	125 / 5"	3.0 / 44	45 / 1.7"	2000 / 78.7"	2170 / 85.4"	2.3 / 5.0
TB8012530	80 / 3"	125 / 5"	3.0 / 44	45 / 1.7"	3000 / 118.1"	3170 / 124.8"	4.2 / 9.2
TB8012540	80 / 3"	125 / 5"	3.0 / 44	45 / 1.7"	4000 / 157.4"	4170 / 164.2"	5.0 / 11.0
TB8012550	80 / 3"	125 / 5"	3.0 / 44	45 / 1.7"	5000 / 196.8"	5170 / 203.5"	5.7 / 12.5
TB10015010	100 / 4"	150 / 6"	2.5 / 36	64 / 2.5"	1000 / 39.3"	1170 / 46.1"	1.6 / 3.5
TB10015015	100 / 4"	150 / 6"	2.5 / 36	64 / 2.5"	1500 / 59.0"	1670 / 65.7"	2.2 / 4.8
TB10015020	100 / 4"	150 / 6"	2.5 / 36	64 / 2.5"	2000 / 78.7"	2170 / 85.4"	2.6 / 5.7
TB10015030	100 / 4"	150 / 6"	2.5 / 36	64 / 2.5"	3000 / 118.1"	3170 / 124.8"	4.7 / 10.3
TB10015040	100 / 4"	150 / 6"	2.5 / 36	64 / 2.5"	4000 / 157.4"	4170 / 164.2"	5.7 / 12.5
TB10015050	100 / 4"	150 / 6"	2.5 / 36	64 / 2.5"	5000 / 196.8"	5170 / 203.5"	6.5 / 14.3
TB15020010	150 / 6"	200 / 8"	2.5 / 36	89 / 3.5"	1000 / 39.3"	1170 / 46.1"	1.9 / 4.1
TB15020015	150 / 6"	200 / 8"	2.5 / 36	89 / 3.5"	1500 / 59.0"	1670 / 65.7"	2.4 / 5.3
TB15020020	150 / 6"	200 / 8"	2.5 / 36	89 / 3.5"	2000 / 78.7"	2170 / 85.4"	2.8 / 6.1
TB15020030	150 / 6"	200 / 8"	2.5 / 36	89 / 3.5"	3000 / 118.1"	3170 / 124.8"	3.8 / 8.3
TB15020040	150 / 6"	200 / 8"	2.5 / 36	89 / 3.5"	4000 / 157.4"	4170 / 164.2"	4.9 / 10.8
TB15020050	150 / 6"	200 / 8"	2.5 / 36	89 / 3.5"	5000 / 196.8"	5170 / 203.5"	5.3 / 11.6
TB15025010	150 / 6"	250 / 10"	2.5 / 36	102 / 4.2"	1000 / 39.3"	1170 / 46.1"	2.2 / 4.8
TB15025015	150 / 6"	250 / 10"	2.5 / 36	102 / 4.2"	1500 / 59.0"	1670 / 65.7"	2.7 / 6.0
TB15025020	150 / 6"	250 / 10"	2.5 / 36	102 / 4.2"	2000 / 78.7"	2170 / 85.4"	3.2 / 7.0
TB15025030	150 / 6"	250 / 10"	2.5 / 36	102 / 4.2"	3000 / 118.1"	3170 / 124.8"	4.2 / 9.2
TB15025040	150 / 6"	250 / 10"	2.5 / 36	102 / 4.2"	4000 / 157.4"	4170 / 164.2"	5.2 / 11.4
TB15025050	150 / 6"	250 / 10"	2.5 / 36	102 / 4.2"	5000 / 196.8"	5170 / 203.5"	6.2 / 13.6

# Long Lateral Packers



TAPASAN Long Lateral Packers are products that allow point repairs on pipelines. These are produced by vulcanizing SBR+NR rubber and high-strength fabrics. It is resistant to temperatures between -30°C and +70°C.

\*Can be produced as a Push Rod compatible head.

Product Code : TB



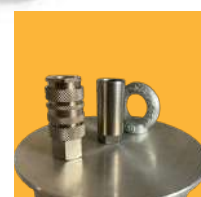
Connection Type



Back Hook Design



Patch Length Stripes



Push Rod Connection

[www.tapasan.net](http://www.tapasan.net)

Product Code	Size Usage Range		Max. Working Pressure (bar) / (psi)	Deflated Plug Dimensions			Approx. Weight (kg) / (lbs)
	Min. Diameter	Max. Diameter		Diameter	Length	Total Length	
	(mm) / (inch)	(mm) / (inch)					
TB20030010	200 / 8"	300 / 12"	2.0 / 29	150 / 6.0"	1000 / 39.3"	1160 / 45.6"	3.6 / 7.9
TB20030015	200 / 8"	300 / 12"	2.0 / 29	150 / 6.0"	1500 / 59.0"	1660 / 65.3"	4.1 / 9.0
TB20030020	200 / 8"	300 / 12"	2.0 / 29	150 / 6.0"	2000 / 78.7"	2160 / 85"	5.2 / 11.4
TB20030030	200 / 8"	300 / 12"	2.0 / 29	150 / 6.0"	3000 / 118.1"	3160 / 124.4"	11.1 / 24.4
TB20030040	200 / 8"	300 / 12"	2.0 / 29	150 / 6.0"	4000 / 157.4"	4160 / 163.7"	8.5 / 18.7
TB20030050	200 / 8"	300 / 12"	2.0 / 29	150 / 6.0"	5000 / 196.8"	5160 / 203.1"	10.5 / 23.1
TB30040010	300 / 12"	400 / 16"	1.0 / 15	220 / 8.6"	1000 / 39.3"	1160 / 45.6"	11.0 / 24.2
TB30040015	300 / 12"	400 / 16"	1.0 / 15	220 / 8.6"	1500 / 59.0"	1660 / 65.3"	11.8 / 25.9
TB30040020	300 / 12"	400 / 16"	1.0 / 15	220 / 8.6"	2000 / 78.7"	2160 / 85"	14.1 / 31.0
TB30040030	300 / 12"	400 / 16"	1.0 / 15	220 / 8.6"	3000 / 118.1"	3160 / 124.4"	18.3 / 40.2
TB30040040	300 / 12"	400 / 16"	1.0 / 15	220 / 8.6"	4000 / 157.4"	4160 / 163.7"	22.2 / 48.8
TB30040050	300 / 12"	400 / 16"	1.0 / 15	220 / 8.6"	5000 / 196.8"	5160 / 203.1"	25.8 / 56.7
TB40050015	400 / 16"	500 / 20"	1.0 / 15	293 / 11.5"	1500 / 59.0"	1660 / 65.3"	23.0 / 50.6
TB40050020	400 / 16"	500 / 20"	1.0 / 15	293 / 11.5"	2000 / 78.7"	2160 / 85"	25.3 / 55.6
TB40050030	400 / 16"	500 / 20"	1.0 / 15	293 / 11.5"	3000 / 118.1"	3160 / 124.4"	29.5 / 64.9
TB40050040	400 / 16"	500 / 20"	1.0 / 15	293 / 11.5"	4000 / 157.4"	4160 / 163.7"	33.4 / 73.4
TB40050050	400 / 16"	500 / 20"	1.0 / 15	293 / 11.5"	5000 / 196.8"	5160 / 203.1"	37.0 / 81.4
TB50060015	500 / 20"	600 / 24"	1.0 / 15	340 / 13.4"	1500 / 59.0"	1660 / 65.3"	25.0 / 55.5
TB45060020	450 / 18"	600 / 24"	1.0 / 15	340 / 13.4"	2000 / 78.7"	2160 / 85"	29.4 / 64.6
TB50060030	450 / 18"	600 / 24"	1.0 / 15	340 / 13.4"	3000 / 118.1"	3160 / 124.4"	31.0 / 68.2
TB50060040	450 / 18"	600 / 24"	1.0 / 15	340 / 13.4"	4000 / 157.4"	4160 / 163.7"	33.0 / 72.6
TB50060050	450 / 18"	600 / 24"	1.0 / 15	340 / 13.4"	5000 / 196.8"	5160 / 203.1"	37.0 / 81.4
TB60080015	600 / 24"	800 / 32"	1.0 / 15	375 / 15"	1500 / 59.0"	1660 / 65.3"	33.4 / 73.4
TB60080020	600 / 24"	800 / 32"	1.0 / 15	375 / 15"	2000 / 78.7"	2160 / 85"	44.5 / 97.9
TB60080030	600 / 24"	800 / 32"	1.0 / 15	375 / 15"	3000 / 118.1"	3160 / 124.4"	50.4 / 110.8
TB700100015	700 / 28"	1000 / 40"	1.0 / 15	584 / 23"	1500 / 59.0"	1660 / 65.3"	45.0 / 99.0
TB700100020	700 / 28"	1000 / 40"	1.0 / 15	584 / 23"	2000 / 78.7"	2160 / 85"	60.0 / 132.0
TB700100025	700 / 28"	1000 / 40"	1.0 / 15	584 / 23"	2500 / 98.4"	2660 / 104.7"	75.0 / 165.0
TB700120020	700 / 28"	1200 / 48"	1.0 / 15	584 / 23"	2000 / 78.7"	2160 / 85"	61.0 / 134.2
TB700120025	700 / 28"	1200 / 48"	1.0 / 15	584 / 23"	2500 / 98.4"	2660 / 104.7"	77.0 / 169.4
TB1000150020	1000 / 40"	1500 / 60"	1.0 / 15	860 / 34"	2000 / 78.7"	2160 / 85"	82.0 / 180.4
TB1000150030	1000 / 40"	1500 / 60"	1.0 / 15	860 / 34"	3000 / 118.1"	3160 / 124.4"	85.0 / 187.0

[www.tapasan.net](http://www.tapasan.net)



# Flexible Packer with By-pass



TAPASAN Flexible Packer with By-pass are products that allow point repair while there is already fluid in the pipes. These are produced by vulcanizing SBR+NR rubber and high-strength fabrics. It is resistant to temperatures between -30°C and +70°C. The biggest advantage is when evacuating inside the pipe, thanks to its wheeled and by-pass designs. It allows point repair and rapid access to the patch area to be repaired at the same time.  
\*Can be produced as a Push Rod compatible head.

Product Code : BTB



Wheel and By-pass System



Patch Length Stripes

Product Code	Size Usage Range		Max. Working Pressure (bar) / (psi)	Deflated Plug Dimensions			By-pass Size (inch)	Approx. Weight (kg) / (lbs)
	Min. Diameter	Max. Diameter		Diameter	Lenght	Total Lenght		
	(mm) / (inch)	(mm) / (inch)		(mm) / (inch)	(mm) / (inch)	(mm) / (inch)		
BTB10015010	100 / 4"	150 / 6"	2.5 / 36	68 / 2.7"	1000 / 39.3"	1350 / 53.1"	NA	3.5 / 7.7
BTB10015015	100 / 4"	150 / 6"	2.5 / 36	68 / 2.7"	1500 / 59.0"	1850 / 72.8"	NA	4.0 / 8.8
BTB10015020	100 / 4"	150 / 6"	2.5 / 36	68 / 2.7"	2000 / 78.7"	2350 / 92.5"	NA	4.5 / 9.9
BTB10015025	100 / 4"	150 / 6"	2.5 / 36	68 / 2.7"	2500 / 98.4"	2850 / 112.2"	NA	5.0 / 11.0
BTB10015030	100 / 4"	150 / 6"	2.5 / 36	68 / 2.7"	3000 / 118.1"	3350 / 131.8"	NA	5.5 / 12.1
BTB10015040	100 / 4"	150 / 6"	2.5 / 36	68 / 2.7"	4000 / 157.4"	4350 / 171.2"	NA	6.0 / 13.2
BTB10015050	100 / 4"	150 / 6"	2.5 / 36	68 / 2.7"	5000 / 196.8"	5350 / 210.6"	NA	7.0 / 15.4
BTB15025010	150 / 6"	250 / 10"	2.5 / 36	112 / 4.4"	1000 / 39.3"	1350 / 53.1"	2"	8.3 / 18.2
BTB15025015	150 / 6"	250 / 10"	2.5 / 36	112 / 4.4"	1500 / 59.0"	1850 / 72.8"	2"	9.4 / 20.6
BTB15025020	150 / 6"	250 / 10"	2.5 / 36	112 / 4.4"	2000 / 78.7"	2350 / 92.5"	2"	12.0 / 26.4
BTB15025025	150 / 6"	250 / 10"	2.5 / 36	112 / 4.4"	2500 / 98.4"	2850 / 112.2"	2"	17.0 / 37.4
BTB15025030	150 / 6"	250 / 10"	2.5 / 36	112 / 4.4"	3000 / 118.1"	3350 / 131.8"	2"	18.0 / 39.6
BTB15025040	150 / 6"	250 / 10"	2.5 / 36	112 / 4.4"	4000 / 157.4"	4350 / 171.2"	2"	20.0 / 44.0
BTB15025050	150 / 6"	250 / 10"	2.5 / 36	112 / 4.4"	5000 / 196.8"	5350 / 210.6"	2"	23.0 / 50.6
BTB20030010	200 / 8"	300 / 12"	2.0 / 29	158 / 6.2"	1000 / 39.3"	1350 / 53.1"	2"	9.5 / 20.9
BTB20030015	200 / 8"	300 / 12"	2.0 / 29	158 / 6.2"	1500 / 59.0"	1850 / 72.8"	2"	11.7 / 25.7
BTB20030020	200 / 8"	300 / 12"	2.0 / 29	158 / 6.2"	2000 / 78.7"	2350 / 92.5"	2"	13.5 / 29.7
BTB20030030	200 / 8"	300 / 12"	2.0 / 29	158 / 6.2"	3000 / 118.1"	3350 / 131.8"	2"	16.0 / 35.2
BTB20030040	200 / 8"	300 / 12"	2.0 / 29	158 / 6.2"	4000 / 157.4"	4350 / 171.2"	2"	20.1 / 44.2
BTB20030050	200 / 8"	300 / 12"	2.0 / 29	158 / 6.2"	5000 / 196.8"	5350 / 210.6"	2"	24.0 / 52.8
BTB30040010	300 / 12"	400 / 16"	1.5 / 22	220 / 8.6"	1000 / 39.3"	1350 / 53.1"	3"	16.0 / 35.2
BTB30040015	300 / 12"	400 / 16"	1.5 / 22	220 / 8.6"	1500 / 59.0"	1850 / 72.8"	3"	18.0 / 39.6
BTB30040020	300 / 12"	400 / 16"	1.5 / 22	220 / 8.6"	2000 / 78.7"	2350 / 92.5"	3"	22.0 / 48.4
BTB30040030	300 / 12"	400 / 16"	1.5 / 22	220 / 8.6"	3000 / 118.1"	3350 / 131.8"	3"	26.0 / 57.2
BTB30040040	300 / 12"	400 / 16"	1.5 / 22	220 / 8.6"	4000 / 157.4"	4350 / 171.2"	3"	30.0 / 66.0
BTB30040050	300 / 12"	400 / 16"	1.5 / 22	220 / 8.6"	5000 / 196.8"	5350 / 210.6"	3"	34.0 / 71.8
BTB40060015	400 / 16"	600 / 24"	1.0 / 15	340 / 13.3"	1500 / 59.0"	1850 / 72.8"	3"	28.0 / 61.6
BTB40060020	400 / 16"	600 / 24"	1.0 / 15	340 / 13.3"	2000 / 78.7"	2350 / 92.5"	3"	33.0 / 72.6
BTB40060030	400 / 16"	600 / 24"	1.0 / 15	340 / 13.3"	3000 / 118.1"	3350 / 131.8"	3"	41.0 / 90.2
BTB60080015	600 / 24"	800 / 32"	1.0 / 15	375 / 14.7"	1500 / 59.0"	1850 / 72.8"	3"	39.0 / 92.4
BTB60080020	600 / 24"	800 / 32"	1.0 / 15	375 / 14.7"	2000 / 78.7"	2350 / 92.5"	3"	42.0 / 85.5
BTB60080030	600 / 24"	800 / 32"	1.0 / 15	375 / 14.7"	3000 / 118.1"	3350 / 131.8"	3"	48.2 / 92.4
BTB700100015	700 / 28"	1000 / 40"	1.0 / 15	584 / 23"	1500 / 59.0"	1850 / 72.8"	3"	60.7 / 106.0
BTB700100020	700 / 28"	1000 / 40"	1.0 / 15	584 / 23"	2000 / 78.7"	2350 / 92.5"	3"	65.4 / 133.5
BTB700100025	700 / 28"	1000 / 40"	1.0 / 15	584 / 23"	2500 / 98.4"	2850 / 112.2"	3"	70.8 / 143.8
BTB700120020	700 / 28"	1200 / 48"	1.0 / 15	584 / 23"	2000 / 78.7"	2350 / 92.5"	3"	66.4 / 155.7
BTB700120025	700 / 28"	1200 / 48"	1.0 / 15	584 / 23"	2500 / 98.4"	2850 / 112.2"	3"	71.8 / 146.0
BTB1000150020	1000 / 40"	1500 / 60"	1.0 / 15	860 / 34"	2000 / 78.7"	2350 / 92.5"	3"	80.1 / 157.9
BTB1000150030	1000 / 40"	1500 / 60"	1.0 / 15	860 / 34"	3000 / 118.1"	3350 / 131.8"	3"	96.3 / 211.8

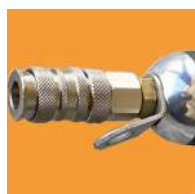
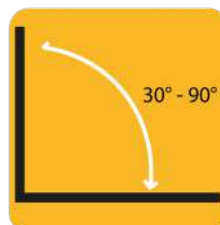
# Bendy Packers



TAPASAN Bendy Packers are products that allow point repair of bends in pipes. These are produced by vulcanizing SBR+NR rubber and high-strength fabrics. It is resistant to temperatures between -30°C and +70°C. The biggest advantage is that it allows repairs to be made in these areas by turning from 30°, 45° and 90° bends.

\*Can be produced as a Push Rod compatible head.

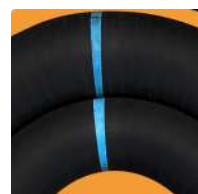
Product Code : DP



Connection Type



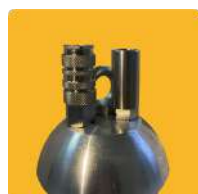
Back Hook Design



Patch Length Stripes



Push Rod Connection



Push Rod Connection

Product Code	Size Usage Range		Max. Working Pressure (bar) / (psi)	Deflated Plug Dimensions			Approx. Weight (kg) / (lbs)
	Min. Diameter (mm) / (inch)	Max. Diameter (mm) / (inch)		Diameter (mm) / (inch)	Lenght (mm) / (inch)	Total Lenght (mm) / (inch)	
	DP10012	100 / 4"		2.0 / 29	43 / 1.7"	1200 / 47.2"	
DP10015	100 / 4"		2.0 / 29	43 / 1.7"	1500 / 59.0"	1850 / 72.8"	1.7 / 3.7
DP10020	100 / 4"		2.0 / 29	43 / 1.7"	2000 / 78.7"	2350 / 92.5"	2.2 / 4.8
DP10030	100 / 4"		2.0 / 29	43 / 1.7"	3000 / 118.1"	3350 / 131.8"	3.4 / 7.4
DP10040	100 / 4"		2.0 / 29	43 / 1.7"	4000 / 157.4"	4350 / 171.2"	4.5 / 9.9
DP10050	100 / 4"		2.0 / 29	43 / 1.7"	5000 / 196.8"	5350 / 210.6"	5.6 / 12.3
DP10012512	100 / 4"	125 / 5"	2.0 / 29	64 / 2.5"	1200 / 47.2"	1550 / 61.0"	1.9 / 4.1
DP10012515	100 / 4"	125 / 5"	2.0 / 29	64 / 2.5"	1500 / 59.0"	1850 / 72.8"	2.2 / 4.8
DP10012520	100 / 4"	125 / 5"	2.0 / 29	64 / 2.5"	2000 / 78.7"	2350 / 92.5"	2.9 / 6.3
DP10012530	100 / 4"	125 / 5"	2.0 / 29	64 / 2.5"	3000 / 118.1"	3350 / 131.8"	4.4 / 9.6
DP10012540	100 / 4"	125 / 5"	2.0 / 29	64 / 2.5"	4000 / 157.4"	4350 / 171.2"	5.8 / 12.7
DP10012550	100 / 4"	125 / 5"	2.0 / 29	64 / 2.5"	5000 / 196.8"	5350 / 210.6"	7.3 / 16.4
DP15012	150 / 6"		2.0 / 29	71 / 2.8"	1200 / 47.2"	1550 / 61.0"	2.3 / 5.0
DP15015	150 / 6"		2.0 / 29	71 / 2.8"	1500 / 59.0"	1850 / 72.8"	2.9 / 6.3
DP15020	150 / 6"		2.0 / 29	71 / 2.8"	2000 / 78.7"	2350 / 92.5"	3.8 / 8.3
DP15030	150 / 6"		2.0 / 29	71 / 2.8"	3000 / 118.1"	3350 / 131.8"	5.8 / 12.7
DP15040	150 / 6"		2.0 / 29	71 / 2.8"	4000 / 157.4"	4350 / 171.2"	7.7 / 16.9
DP15050	150 / 6"		2.0 / 29	71 / 2.8"	5000 / 196.8"	5350 / 210.6"	9.7 / 21.3
DP15017012	150 / 6"	170 / 6.7"	2.0 / 29	112 / 4.4"	1200 / 47.2"	1550 / 61.0"	3.2 / 7.0
DP15017015	150 / 6"	170 / 6.7"	2.0 / 29	112 / 4.4"	1500 / 59.0"	1850 / 72.8"	4.0 / 8.8
DP15017020	150 / 6"	170 / 6.7"	2.0 / 29	112 / 4.4"	2000 / 78.7"	2350 / 92.5"	5.3 / 11.6
DP15017030	150 / 6"	170 / 6.7"	2.0 / 29	112 / 4.4"	3000 / 118.1"	3350 / 131.8"	8.0 / 17.6
DP15017040	150 / 6"	170 / 6.7"	2.0 / 29	112 / 4.4"	4000 / 157.4"	4350 / 171.2"	10.7 / 23.5
DP15017050	150 / 6"	170 / 6.7"	2.0 / 29	112 / 4.4"	5000 / 196.8"	5350 / 210.6"	13.3 / 29.2
DP20022515	200 / 8"	225 / 8.8"	2.0 / 29	150 / 6.0"	1500 / 59.0"	1850 / 72.8"	4.7 / 10.3
DP20022520	200 / 8"	225 / 8.8"	2.0 / 29	150 / 6.0"	2000 / 78.7"	2350 / 92.5"	7.0 / 15.4
DP20022530	200 / 8"	225 / 8.8"	2.0 / 29	150 / 6.0"	3000 / 118.1"	3350 / 131.8"	8.8 / 19.3
DP20022540	200 / 8"	225 / 8.8"	2.0 / 29	150 / 6.0"	4000 / 157.4"	4350 / 171.2"	10.6 / 23.3
DP30015	300 / 12"		1.5 / 22	214 / 8.4"	1500 / 59.0"	1850 / 72.8"	6.5 / 14.3
DP30020	300 / 12"		1.5 / 22	214 / 8.4"	2000 / 78.7"	2350 / 92.5"	8.8 / 19.3
DP30030	300 / 12"		1.5 / 22	214 / 8.4"	3000 / 118.1"	3350 / 131.8"	10.6 / 23.3
DP30040	300 / 12"		1.5 / 22	214 / 8.4"	4000 / 157.4"	4350 / 171.2"	12.4 / 27.2
DP30050	300 / 12"		1.5 / 22	214 / 8.4"	5000 / 196.8"	5350 / 210.6"	14.1 / 31.0
DP40015	400 / 16"		1.5 / 22	290 / 11.4"	1500 / 59.0"	1850 / 72.8"	9.1 / 20.0
DP40020	400 / 16"		1.5 / 22	290 / 11.4"	2000 / 78.7"	2350 / 92.5"	10.8 / 23.7
DP40030	400 / 16"		1.5 / 22	290 / 11.4"	3000 / 118.1"	3350 / 131.8"	14.2 / 31.2



# Medusa Packers



TAPASAN Medusa Packers are products that allow point repairs to be made in areas very close to the pipe corner. These are produced by vulcanizing SBR+NR rubber and high-strength fabrics. It is resistant to temperatures between -30°C and +70°C. The biggest advantage is that the pipe is repaired thanks to the back part made of soft rubber access to areas where it is very difficult.

**\*Can be produced as a Push Rod compatible head.**

Product Code : MED



Product Code	Size Usage Range		Max. Working Pressure	Deflated Plug Dimensions			Approx. Weight (kg) / (lbs)
	Min. Diameter	Max. Diameter		Diameter	Lenght	Total Lenght	
	(mm) / (inch)	(mm) / (inch)	(bar) / (psi)	(mm) / (inch)	(mm) / (inch)	(mm) / (inch)	
MED7010006	70 / 2.8"	100 / 4"	3.0 / 44	45 / 1.7"	600 / 23.6"	870 / 34.2"	1.0 / 2.2
MED7010010	70 / 2.8"	100 / 4"	3.0 / 44	45 / 1.7"	1000 / 39.3"	1160 / 45.6"	1.6 / 3.5
MED7010015	70 / 2.8"	100 / 4"	3.0 / 44	45 / 1.7"	1500 / 59.0"	1660 / 65.3"	2.0 / 4.4
MED7010020	70 / 2.8"	100 / 4"	3.0 / 44	45 / 1.7"	2000 / 78.7"	2160 / 85"	2.7 / 5.9
MED8012510	80 / 3"	125 / 5"	3.0 / 44	45 / 1.7"	1000 / 39.3"	1160 / 45.6"	1.6 / 3.5
MED8012515	80 / 3"	125 / 5"	3.0 / 44	45 / 1.7"	1500 / 59.0"	1660 / 65.3"	2.0 / 4.4
MED8012520	80 / 3"	125 / 5"	3.0 / 44	45 / 1.7"	2000 / 78.7"	2160 / 85"	2.7 / 5.9
MED10015010	100 / 4"	150 / 6"	2.5 / 36	64 / 2.5"	1000 / 39.3"	1160 / 45.6"	3.1 / 6.8
MED10015015	100 / 4"	150 / 6"	2.5 / 36	64 / 2.5"	1500 / 59.0"	1660 / 65.3"	4.0 / 8.8
MED10015020	100 / 4"	150 / 6"	2.5 / 36	64 / 2.5"	2000 / 78.7"	2160 / 85"	5.5 / 12.1
MED15020010	150 / 6"	200 / 8"	2.5 / 36	89 / 3.5"	1000 / 39.3"	1160 / 45.6"	3.3 / 7.2
MED15020015	150 / 6"	200 / 8"	2.5 / 36	89 / 3.5"	1500 / 59.0"	1660 / 65.3"	4.4 / 12.7
MED15020020	150 / 6"	200 / 8"	2.5 / 36	89 / 3.5"	2000 / 78.7"	2160 / 85"	5.8 / 12.7
MED15025010	150 / 6"	250 / 10"	2.5 / 36	102 / 4.1"	1000 / 39.3"	1160 / 45.6"	4.5 / 9.9
MED15025015	150 / 6"	250 / 10"	2.5 / 36	102 / 4.1"	1500 / 59.0"	1660 / 65.3"	5.7 / 12.5
MED15025020	150 / 6"	250 / 10"	2.5 / 36	102 / 4.1"	2000 / 78.7"	2160 / 85"	7.1 / 15.6



Connection Type



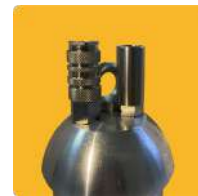
Technical Detail Label



Patch Lenght Stripes



Push Rod Connection



Push Rod Connection



Soft Back Design

# Lateral Packers

## with wheels



TAPASAN Lateral Packers with wheels are products that allow point repairs on pipelines. These are produced by vulcanizing SBR+NR rubber and high-strength fabrics. It is resistant to temperatures between -30°C and +70°C. The biggest advantage is it moves in the pipe easily thanks to its wheels design.

\*Can be produced as a Push Rod compatible head.

Product Code : TB.../W



Patch Length Stripes



Wheel System and Connection

www.tapasan.net

Product Code	Size Usage Range		Max. Working Pressure (bar) / (psi)	Deflated Plug Dimensions		
	Min. Diameter	Max. Diameter		Diameter	Length	Total Length
	(mm) / (inch)	(mm) / (inch)		(mm) / (inch)	(mm) / (inch)	(mm) / (inch)
TB15020050W	150 / 6"	200 / 8"	2.5 / 36	89 / 3.5"	5000 / 196.8"	5170 / 203.5"
TB15025010W	150 / 6"	250 / 10"	2.5 / 36	102 / 4.2"	1000 / 39.3"	1170 / 46.0"
TB15025015W	150 / 6"	250 / 10"	2.5 / 36	102 / 4.2"	1500 / 59.0"	1670 / 65.7"
TB15025020W	150 / 6"	250 / 10"	2.5 / 36	102 / 4.2"	2000 / 78.7"	2170 / 85.4"
TB15025030W	150 / 6"	250 / 10"	2.5 / 36	102 / 4.2"	3000 / 118.1"	3170 / 124.8"
TB15025040W	150 / 6"	250 / 10"	2.5 / 36	102 / 4.2"	4000 / 157.4"	4170 / 164.1"
TB15025050W	150 / 6"	250 / 10"	2.5 / 36	102 / 4.2"	5000 / 196.8"	5170 / 203.5"
TB20030010W	200 / 8"	300 / 12"	2.0 / 29	150 / 6"	1000 / 39.3"	1170 / 46.0"
TB20030015W	200 / 8"	300 / 12"	2.0 / 29	150 / 6"	1500 / 59.0"	1670 / 65.7"
TB20030020W	200 / 8"	300 / 12"	2.0 / 29	150 / 6"	2000 / 78.7"	2170 / 85.4"
TB20030030W	200 / 8"	300 / 12"	2.0 / 29	150 / 6"	3000 / 118.1"	3170 / 124.8"
TB20030040W	200 / 8"	300 / 12"	2.0 / 29	150 / 6"	4000 / 157.4"	4170 / 164.1"
TB20030050W	200 / 8"	300 / 12"	2.0 / 29	150 / 6"	5000 / 196.8"	5170 / 203.5"
TB30040010W	300 / 12"	400 / 16"	1.0 / 15	220 / 8.6"	1000 / 39.3"	1170 / 46.0"
TB30040015W	300 / 12"	400 / 16"	1.0 / 15	220 / 8.6"	1500 / 59.0"	1670 / 65.7"
TB30040020W	300 / 12"	400 / 16"	1.0 / 15	220 / 8.6"	2000 / 78.7"	2170 / 85.4"
TB30040030W	300 / 12"	400 / 16"	1.0 / 15	220 / 8.6"	3000 / 118.1"	3170 / 124.8"
TB30040040W	300 / 12"	400 / 16"	1.0 / 15	220 / 8.6"	4000 / 157.4"	4170 / 164.1"
TB30040050W	300 / 12"	400 / 16"	1.0 / 15	220 / 8.6"	5000 / 196.8"	5170 / 203.5"
TB40050015W	400 / 16"	500 / 20"	1.0 / 15	293 / 11.5"	1500 / 59.0"	1670 / 65.7"
TB40050020W	400 / 16"	500 / 20"	1.0 / 15	293 / 11.5"	2000 / 78.7"	2170 / 85.4"
TB40050030W	400 / 16"	500 / 20"	1.0 / 15	293 / 11.5"	3000 / 118.1"	3170 / 124.8"
TB40050040W	400 / 16"	500 / 20"	1.0 / 15	293 / 11.5"	4000 / 157.4"	4170 / 164.1"
TB40050050W	400 / 16"	500 / 20"	1.0 / 15	293 / 11.5"	5000 / 196.8"	5170 / 203.5"
TB50060015W	500 / 20"	600 / 24"	1.0 / 15	340 / 13.4"	1500 / 59.0"	1670 / 65.7"
TB45060020W	450 / 18"	600 / 24"	1.0 / 15	340 / 13.4"	2000 / 78.7"	2170 / 85.4"
TB50060030W	450 / 18"	600 / 24"	1.0 / 15	340 / 13.4"	3000 / 118.1"	3170 / 124.8"
TB50060040W	450 / 18"	600 / 24"	1.0 / 15	340 / 13.4"	4000 / 157.4"	4170 / 164.1"
TB50060050W	450 / 18"	600 / 24"	1.0 / 15	340 / 13.4"	5000 / 196.8"	5170 / 203.5"
TB60080015W	600 / 24"	800 / 32"	1.0 / 15	375 / 15"	1500 / 59.0"	1670 / 65.7"
TB60080020W	600 / 24"	800 / 32"	1.0 / 15	375 / 15"	2000 / 78.7"	2170 / 85.4"
TB60080030W	600 / 24"	800 / 32"	1.0 / 15	375 / 15"	3000 / 118.1"	3170 / 124.8"

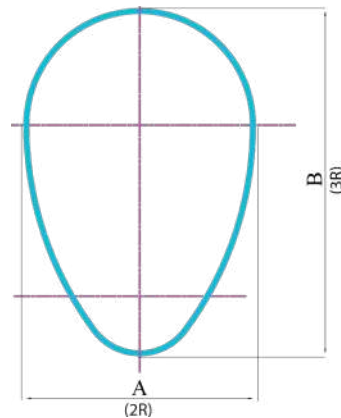


# Egg-Shaped Packers



TAPASAN Egg-Shaped Packers are products that allow point repair on egg type pipes. These are produced by vulcanizing SBR+NR rubber and high-strength fabrics. It is resistant to temperatures between -30°C and +70°C. The biggest advantage is that it is easy to repair to the area to be repaired, thanks to its wheeled structure.

Product Code : ESB



Patch Length Stripes



Wheel Sytem

Product Code	Size Usage Range		Max. Working Pressure (bar) / (psi)	Deflated Plug Dimensions			By-pass Size (inch)	Approx. Weight (kg) / (lbs)
	A	B		A	B	Lenght		
	(mm) / (inch)	(mm) / (inch)		(mm) / (inch)	(mm) / (inch)	(mm) / (inch)		
ESB200300	150 / 6"	300 / 12"	1.0 / 15	180 / 7"	270 / 11"	1000 / 39.3"	2"	18.4 / 40.4
ESB400600	400 / 16"	400 / 16"	1.0 / 15	380 / 15"	570 / 22"	1200 / 47.2"	2"	18.6 / 40.9
ESB600900	600 / 24"	900 / 35"	1.0 / 15	580 / 23"	870 / 34"	1200 / 47.2"	2x2"	18.8 / 41.3
ESB8001200	800 / 32"	1200 / 48"	1.0 / 15	780 / 31"	1170 / 46"	1200 / 47.2"	2x2"	24.8 / 54.5

# Short Packers



TAPASAN Short Packers are products that allow point repair while providing fluid evacuation in pipes. These are produced by vulcanizing SBR+NR rubber and high-strength fabrics. It is resistant to temperatures between -30°C and +70°C. The biggest advantage is its large bypass and wheel structure, making it easier to fit inside the pipe. It can move and evacuate faster than the standard by-pass packers.  
\*Can be produced as a Push Rod compatible head.

Product Code : LBTB



Patch Length Stripes



Large By-pass & Wheel Sytem

Product Code	Size Usage Range		Max. Working Pressure (bar) / (psi)	Deflated Plug Dimensions			Approx. Weight (kg) / (lbs)
	Min. Diameter	Max. Diameter		Diameter	Lenght	Total Lenght	
	(mm) / (inch)	(mm) / (inch)		(mm) / (inch)	(mm) / (inch)	(mm) / (inch)	
LBTB150200	150 / 6"	200 / 8"	2.0 / 29	110 / 2.7"	800 / 31.4"	1020 / 40.1"	7.0 / 15.4
LBTB250300	250 / 10"	300 / 12"	2.0 / 29	190 / 4.8"	800 / 31.4"	1100 / 43.3"	16.0 / 35.2
LBTB300400	300 / 12"	400 / 16"	1.5 / 22	240 / 5.9"	800 / 31.4"	1100 / 43.3"	25.0 / 55.0
LBTB450500	450 / 18"	500 / 20"	1.5 / 22	380 / 9.6"	900 / 35.4"	1100 / 43.3"	38.0 / 83.6
LBTB500600	500 / 20"	600 / 24"	1.5 / 22	442 / 11.2"	900 / 35.4"	1100 / 43.3"	49.0 / 107.8

# Wide Range

# Lateral Packers

TAPASAN Wide Diameter Range Repair Balloons are products that allow point repair on pipes. These are produced by vulcanizing SBR+NR rubber and high-strength fabrics. It is resistant to temperatures between -30°C and +70°C. The biggest advantage is that it can be used with more than one product with a single product thanks to its wide diameter range.

**\*Can be produced as a Push Rod compatible head.**

Product Code : PTB



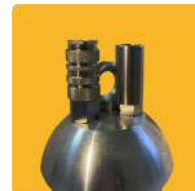
Web Page

WhatsApp

E-mail



Connection Type



Push Rod Connection



Technical Detail Label



Push Rod Connection



Smooth Surface



Product Code	Size Usage Range		Max. Working Pressure	Deflated Plug Dimensions		
	Min. Diameter	Max. Diameter		Diameter	Lenght	Total Lenght
	(mm) / (inch)	(mm) / (inch)				
PTB307005	30 / 1.2"	70 / 2.8"	4.0 / 58	25 / 1"	500 / 19.7"	740 / 29.1"
PTB307010	30 / 1.2"	70 / 2.8"	4.0 / 58	25 / 1"	1000 / 39.4"	1240 / 48.8"
PTB307015	30 / 1.2"	70 / 2.8"	4.0 / 58	25 / 1"	1500 / 59.1"	1740 / 68.5"
PTB307020	30 / 1.2"	70 / 2.8"	4.0 / 58	25 / 1"	2000 / 78.7"	2240 / 88.2"
PTB307025	30 / 1.2"	70 / 2.8"	4.0 / 58	25 / 1"	2500 / 98.4"	2740 / 107.9"
PTB307030	30 / 1.2"	70 / 2.8"	4.0 / 58	25 / 1"	3000 / 118.1"	3240 / 127.6"
PTB307035	30 / 1.2"	70 / 2.8"	4.0 / 58	25 / 1"	3500 / 137.8"	3740 / 147.2"
PTB307040	30 / 1.2"	70 / 2.8"	4.0 / 58	25 / 1"	4000 / 157.5"	4240 / 166.9"
PTB307045	30 / 1.2"	70 / 2.8"	4.0 / 58	25 / 1"	4500 / 177.2"	4740 / 186.6"
PTB307050	30 / 1.2"	70 / 2.8"	4.0 / 58	25 / 1"	5000 / 196.9"	5240 / 206.3"
PTB4010005	40 / 1.6"	100 / 4"	4.0 / 58	32 / 1.3"	500 / 19.7"	740 / 29.1"
PTB4010007	40 / 1.6"	100 / 4"	4.0 / 58	32 / 1.3"	700 / 27.6"	940 / 37.0"

Product Code	Size Usage Range		Max. Working Pressure	Deflated Plug Dimensions		
	Min. Diameter	Max. Diameter		Diameter	Lenght	Total Lenght
	(mm) / (inch)	(mm) / (inch)				
PTB4010010	40 / 1.6"	100 / 4"	4.0 / 58	32 / 1.3"	1000 / 39.4"	1240 / 48.8"
PTB4010015	40 / 1.6"	100 / 4"	4.0 / 58	32 / 1.3"	1500 / 59.1"	1740 / 68.5"
PTB4010020	40 / 1.6"	100 / 4"	4.0 / 58	32 / 1.3"	2000 / 78.7"	2240 / 88.2"
PTB4010025	40 / 1.6"	100 / 4"	4.0 / 58	32 / 1.3"	2500 / 98.4"	2740 / 107.9"
PTB4010030	40 / 1.6"	100 / 4"	4.0 / 58	32 / 1.3"	3000 / 118.1"	3240 / 127.6"
PTB4010035	40 / 1.6"	100 / 4"	4.0 / 58	32 / 1.3"	3500 / 137.8"	3740 / 147.2"
PTB4010040	40 / 1.6"	100 / 4"	4.0 / 58	32 / 1.3"	4000 / 157.5"	4240 / 166.9"
PTB4010045	40 / 1.6"	100 / 4"	4.0 / 58	32 / 1.3"	4500 / 177.2"	4740 / 186.6"
PTB4010050	40 / 1.6"	100 / 4"	4.0 / 58	32 / 1.3"	5000 / 196.9"	5240 / 206.3"
PTB5012505	50 / 2"	125 / 5"	3.0 / 44	40 / 1.6"	500 / 19.7"	630 / 24.8"
PTB5012510	50 / 2"	125 / 5"	3.0 / 44	40 / 1.6"	1000 / 39.4"	1130 / 44.5"
PTB5012515	50 / 2"	125 / 5"	3.0 / 44	40 / 1.6"	1500 / 59.1"	1630 / 64.2"
PTB5012520	50 / 2"	125 / 5"	3.0 / 44	40 / 1.6"	2000 / 78.7"	2130 / 83.9"
PTB5012525	50 / 2"	125 / 5"	3.0 / 44	40 / 1.6"	2500 / 98.4"	2630 / 103.5"
PTB5012530	50 / 2"	125 / 5"	3.0 / 44	40 / 1.6"	3000 / 118.1"	3130 / 123.2"
PTB5012535	50 / 2"	125 / 5"	3.0 / 44	40 / 1.6"	3500 / 137.8"	3630 / 142.9"
PTB5012540	50 / 2"	125 / 5"	3.0 / 44	40 / 1.6"	4000 / 157.5"	4130 / 162.6"
PTB5012545	50 / 2"	125 / 5"	3.0 / 44	40 / 1.6"	4500 / 177.2"	4630 / 182.3"
PTB5012550	50 / 2"	125 / 5"	3.0 / 44	40 / 1.6"	5000 / 196.9"	5130 / 202"
PTB8020005	80 / 3.1"	200 / 8"	3.0 / 44	60 / 2.4"	500 / 19.7"	630 / 24.8"
PTB8020010	80 / 3.1"	200 / 8"	3.0 / 44	60 / 2.4"	1000 / 39.4"	1130 / 44.5"
PTB8020015	80 / 3.1"	200 / 8"	3.0 / 44	60 / 2.4"	1500 / 59.1"	1630 / 64.2"
PTB8020020	80 / 3.1"	200 / 8"	3.0 / 44	60 / 2.4"	2000 / 78.7"	2130 / 83.9"
PTB8020025	80 / 3.1"	200 / 8"	3.0 / 44	60 / 2.4"	2500 / 98.4"	2630 / 103.5"
PTB8020030	80 / 3.1"	200 / 8"	3.0 / 44	60 / 2.4"	3000 / 118.1"	3130 / 123.2"
PTB8020035	80 / 3.1"	200 / 8"	3.0 / 44	60 / 2.4"	3500 / 137.8"	3630 / 142.9"
PTB8020040	80 / 3.1"	200 / 8"	3.0 / 44	60 / 2.4"	4000 / 157.5"	4130 / 162.6"
PTB8020045	80 / 3.1"	200 / 8"	3.0 / 44	60 / 2.4"	4500 / 177.2"	4630 / 182.3"
PTB8020050	80 / 3.1"	200 / 8"	3.0 / 44	60 / 2.4"	5000 / 196.9"	5130 / 202"
PTB20040005	200 / 8"	400 / 16"	2.5 / 36	200 / 6"	500 / 19.7"	630 / 24.8"
PTB20040010	200 / 8"	400 / 16"	2.5 / 36	200 / 6"	1000 / 39.4"	1130 / 44.5"
PTB20040015	200 / 8"	400 / 16"	2.5 / 36	200 / 6"	1500 / 59.1"	1630 / 64.2"
PTB20040020	200 / 8"	400 / 16"	2.5 / 36	200 / 6"	2000 / 78.7"	2130 / 83.9"
PTB20040025	200 / 8"	400 / 16"	2.5 / 36	200 / 6"	2500 / 98.4"	2630 / 103.5"
PTB20040030	200 / 8"	400 / 16"	2.5 / 36	200 / 6"	3000 / 118.1"	3130 / 123.2"
PTB25060005	250 / 10"	600 / 24"	2.5 / 36	220 / 8.7"	500 / 19.7"	630 / 24.8"
PTB25060010	250 / 10"	600 / 24"	2.5 / 36	220 / 8.7"	1000 / 39.4"	1130 / 44.5"
PTB25060015	250 / 10"	600 / 24"	2.5 / 36	220 / 8.7"	1500 / 59.1"	1630 / 64.2"
PTB25060020	250 / 10"	600 / 24"	2.5 / 36	220 / 8.7"	2000 / 78.7"	2130 / 83.9"



# Hat Packer



Hat Packers are products that allow point repair of pipes with T connection with the help of design. It is produced with a design that allows combinations of repair hats of different sizes and inflating the hat to be mounted on the product, thanks to the M6 female bolt flowing in the middle of the product. These are produced by vulcanizing SBR+NR rubber and high-strength fabrics. It is resistant to temperatures between -30°C and +70°C.

Product Code : HTB



Product Code	Size Usage Range		Max. Working Pressure	Deflated Plug Dimensions			By-pass Size
	Min. Diameter	Max. Diameter		Diameter	Lenght	Total Lenght	
	(mm) / (inch)	(mm) / (inch)		(mm) / (inch)	(mm) / (inch)	(mm) / (inch)	
HTB150	150 / 6"		2.0 / 29	64 / 2.5"	700 / 27.5"	800 / 31.4"	NA
HTB180	180 / 7"		2.0 / 29	89 / 3.5"	700 / 27.5"	800 / 31.4"	NA
HTB200250	200 / 8"	250 / 10"	2.0 / 29	102 / 4.0"	800 / 31.4"	1150 / 45.3"	1"
HTB250300	250 / 10"	300 / 12"	2.0 / 29	158 / 6.2"	800 / 31.4"	1150 / 45.3"	2"
HTB300400	300 / 12"	300 / 16"	1.5 / 22	220 / 8.6"	800 / 31.4"	1150 / 45.3"	3"
HTB400600	300 / 16"	600 / 24"	1.0 / 15	295 / 11.6"	800 / 31.4"	1150 / 45.3"	3"

## ACCESSORIES



Product Code	Product Name	Thread Size
T026DG13	Plug Coupling	R 1/4"
T025DG13KE	Packer Coupling	R 1/4"
T026DG21	R 1/2" By-pass Coupling	R 1/2"
FC14SU14	Flexible Coupling	R 1/4"



Product Code	Product Name	Thread Size
UC.CH.026.001	Quick coupling connection, 8mm Air Hose Connection	-
UC.CE.026.001	Quick coupling connection, 1/4" Male Thread	R 1/4" Male
UC.CAK.G.14.002	Quick coupling connection, 1/4" Female Thread	R 1/4" Female
UC.CE.12.001	Quick coupling connection, 1/2" Male Thread	R 1/2" Male



Product Code	Product Name	Thread Size
PRH14	Push Rod Connection with Hook	1/4"
PRH34	Push Rod Connection with Hook	3/4"
PRA14	Push Rod Connection (Lockfast)	1/4"
PRA34	Push Rod Connection (Lockfast)	3/4"

Product Code	Product Name	Thread Size
STZ01	Storz Coupling	1"
STZ02	Storz Coupling	2"
STZ03	Storz Coupling	3"
STZ04	Storz Coupling	4"
STZ06	Storz Coupling	6"



Storz Couplings

Product Code	Product Name	Thread Size
SHC01	Storz Hose Coupling	1"
SHC02	Storz Hose Coupling	2"
SHC03	Storz Hose Coupling	3"
SHC04	Storz Hose Coupling	4"



Storz Hose Coupling

Product Code	Product Name	Pressure (Bar)
RHK25	Pressure Controller with Regulator	2.5 Bar
RHK40	Pressure Controller with Regulator	4.0 Bar



RHK25 / RHK40

Product Code	Product Name	Pressure (Bar)
VHK25	Pressure Controller with Safety Valve	2.5 Bar
VHK40	Pressure Controller with Safety Valve	4.0 Bar



VHK25 / VHK40

Product Code	Product Name	Pressure (Bar)
HH10	8mm Inflating Hose (Blue)	10m
HH15	8mm Inflating Hose (Blue)	15m
HH20	8mm Inflating Hose (Blue)	20m



Inflating Hose

Product Code	Product Name	Lenght
KHK06	Polylift Inflating Hose with Hook	6m
KHK12	Polylift Inflating Hose with Hook	12m



Polylift Inflating Hose with Hook

Product Code	Product Name	Thread Size	Lenght
SH110	Water Hose	1"	10m
SH120	Water Hose	1"	20m
SH210	Water Hose	2"	10m
SH220	Water Hose	2"	20m
SH410	Water Hose	4"	10m
SH420	Water Hose	4"	20m



Water Hose

Product Code	Product Name	Thread Size
STA01	Water Test Adaptor	1"
STA02	Water Test Adaptor	2"
STA03	Water Test Adaptor	3"
STA04	Water Test Adaptor	4"



Water Test Adaptor

Product Code	Product Name	Thread Size
HTA01	Air Test Adaptor	1"
HTA02	Air Test Adaptor	2"
HTA03	Air Test Adaptor	3"
HTA04	Air Test Adaptor	4"



Test Adaptor with Air

Product Code	Product Name	Thread Size
VA01	Storz Valve	1"
VA02	Storz Valve	2"
VA03	Storz Valve	3"
VA04	Storz Valve	4"



STorz Valve



Product Code	Product Name	Lenght
BA21	Bypass Adaptor	R 2" / R 1"
BA41	Bypass Adaptor	R 4" / R 1"
BA42	Bypass Adaptor	R 4" / R 2"



By-pass Adaptor

Product Code	Product Name	Lenght
BR21	By-pass Reduction	2"/1"
BR42	By-pass Reduction	4"/2"



By-pass Reduction

Product Code	Product Name	Products use with
KK70150	Protective Sleeve	KB70150 & KTB70150
KK100200	Protective Sleeve	KB100200 & KTB100200
KK200400	Protective Sleeve	KB200400 & KTB200400
KK200500	Protective Sleeve	KB200500 & KTB200500
KK300600	Protective Sleeve	KB300600 & KTB300600
KK375750	Protective Sleeve	KB375750 & KTB375750
KK5001000	Protective Sleeve	KB5001000 & KTB5001000
KK6001200	Protective Sleeve	KB6001200 & KTB6001200
KK6001600	Protective Sleeve	KB6001600 & KTB6001600



Protective Sleeve

Foot Pump  
(AP01)Foot Pump Hose  
(APH01)Foot Pump Adaptor  
(APA01)


**TAPASAN KAUÇUK PLASTİK SAN. VE TİC. LTD. ŞTİ.**

 Adress: Kale Mahallesi 352 Sokak No: 5, 20170 Pamukkale  
Denizli / TURKEY

Phone: +902583715511

Fax: +902583715511

E-mail: info@tapasan.net

Web: www.tapasan.net

Mobile: +905333804604 (EN)

Mobile: +905336126946 (TR)

We manufacture pneumatic rubber pipe plugs, pipe test plugs and rehabilitation packers more than ten years experience.



Web Page



WhatsApp



E-mail